

# SHANNON CEMETERY EXPANSION

\* Implementing Multiple Options for Burial Space \*







# Statement Of Policy No. 14

**Current Cemetery Lot (8x10)**  
**\$400**

Left (4x10)      Right (4x10)

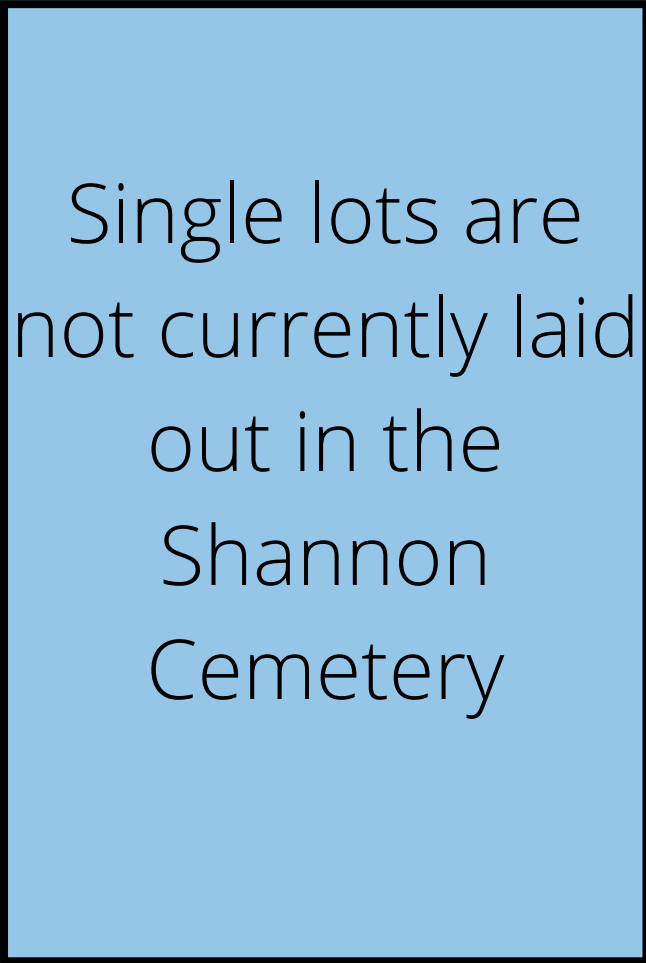

Occasionally, a single lot  
may exist  
in one of the Town's  
Cemeteries (4x10)  
\$250

Moultonborough property owners  
with the intent  
to become a Moultonborough resident in the  
future may purchase a lot for twice  
the amount paid by residents.



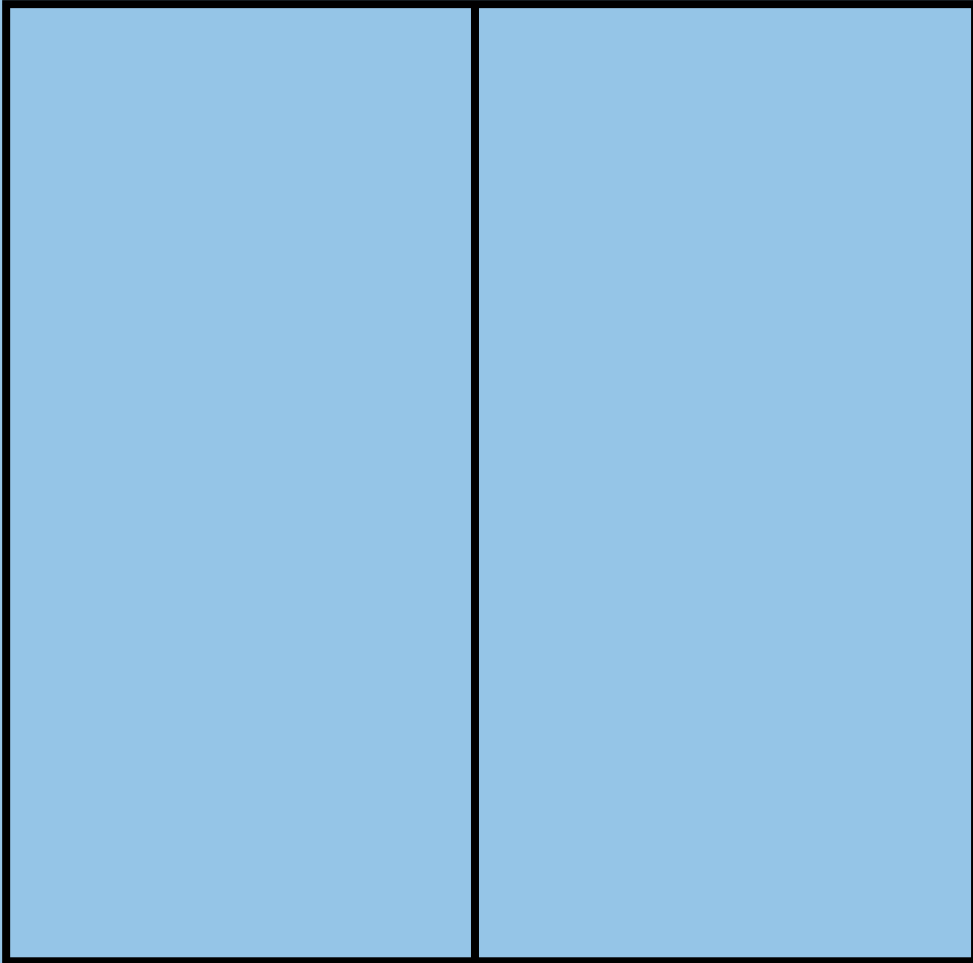
# Current Town Wide Burial Options

One Casket Lot or  
Four Cremations

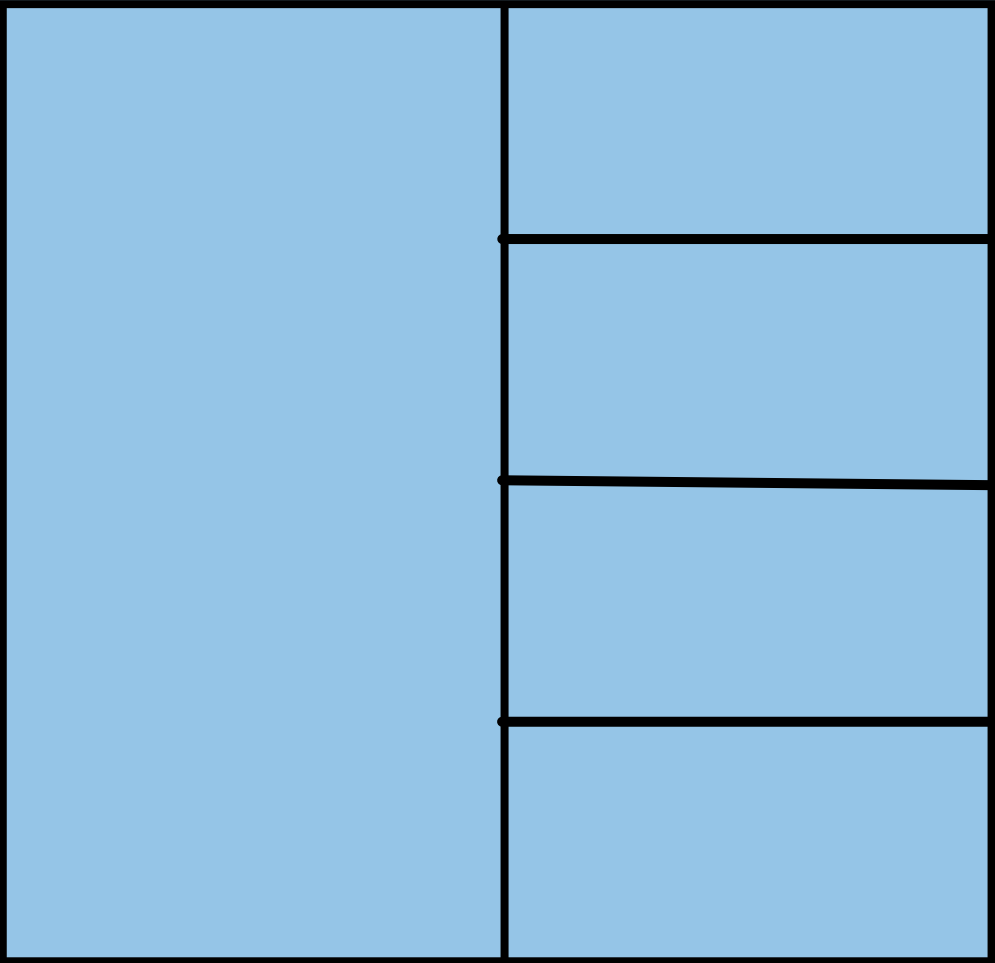


(4x10)

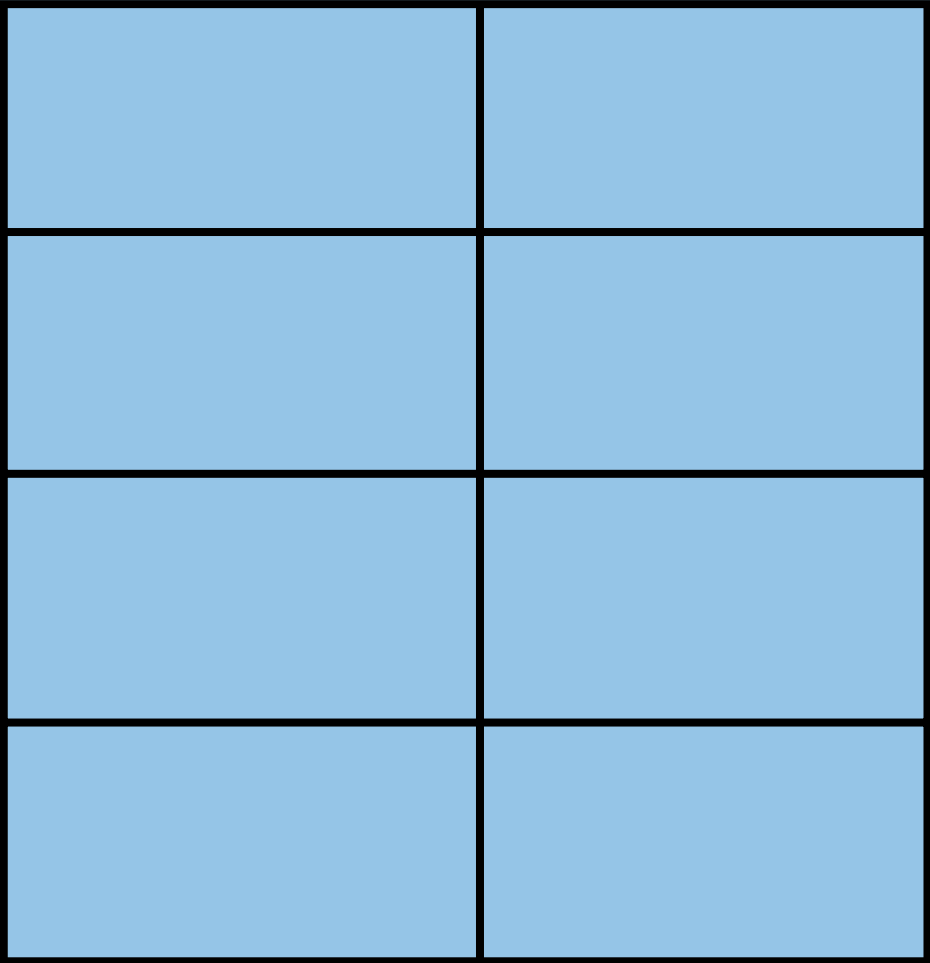
Two Casket Lot



One Casket & Four  
Cremations



Lot of eight  
Cremations



Burial options for lots (8x10)

Town	Cremation Lot	Cremation Inurment	Single Lot	Double Lot	Full Burial Interment
Moultonborough	N/A	\$150-\$200	\$250	\$400	\$300-\$500
Tamworth	\$600 (4x4)	Responsibility of owner(s)	\$600 (4x12)	Can purchase two single lots	Responsibility of owner(s)
Ashland	N/A	\$250-\$300	\$250	\$600	\$650
Center Harbor	N/A	\$150	\$750 (1 Full or 4 Cremations)	Can purchase two single lots	\$150
Sandwich	\$725 2 Cremains Spaces	\$360	\$1,960 4 Casket Spaces	\$3,680 8 Casket Spaces	\$180-\$1,1440
Holderness	\$550 4 Cremains Spaces	\$350-\$500	\$550 Individual Grave Site	\$1,075 2 Grave Site Plot	\$850-\$1,200
Laconia	\$500 Single or double urn	\$400-625	\$700	\$1,400	\$850-\$1,100
Meredith	\$150 1 Cremains Space	\$200-\$350	\$500 (4x11)	Can purchase two single lots	\$400-\$600
Tuftonborough	\$150 (4x4) 2 Cremains Space	\$100	\$350 (4x10) 2 Full Burials	Can purchase two single lots	Responsibly of owner(s)





## **Currently In Shannon Cemetery:**

**33 Double Lots (8x10)  
Available for Purchase**

**64 Potential Spaces (8x10)  
for Purchase**

On average we perform 20 burials a year.



# US Deaths and Cremations by Region

Region	State	2020 Cremations	2020 Deaths	2020 % Cremations
East North Central	Illinois	68,966	128,660	53.6%
	Indiana	38,339	78,194	49.0%
	Michigan	74,240	115,246	64.4%
	Ohio	76,467	143,785	53.2%
	Wisconsin	40,507	62,432	64.9%
	Sub-Total Region	298,519	528,317	56.5%
East South Central	Alabama	22,586	63,183	35.7%
	Kentucky	20,691	55,437	37.3%
	Mississippi	11,367	39,105	29.1%
	Tennessee	37,350	88,231	42.3%
	Sub-Total Region	91,994	245,956	37.4%
Middle Atlantic	New Jersey	49,178	95,443	51.5%
	New York	92,574	189,358	48.9%
	Pennsylvania	85,419	156,344	54.6%
	Sub-Total Region	227,171	441,145	51.5%
Mountain	Arizona	51,578	75,133	68.6%
	Colorado	35,125	47,570	73.8%
	Idaho	10,980	16,460	66.7%
	Montana	9,156	11,983	76.4%
	Nevada	25,572	31,441	81.3%
	New Mexico	14,609	22,644	64.5%
	Utah	9,201	22,216	41.4%
	Wyoming	4,137	5,526	74.9%
	Sub-Total Region	160,358	232,973	68.8%
New England	Connecticut	22,890	37,513	61.0%
	Maine	12,467	15,618	79.8%
	Massachusetts	37,176	72,577	51.2%
	New Hampshire	10,470	13,511	77.5%
	Rhode Island	6,337	12,137	52.2%
	Vermont	4,448	5,981	74.4%

# Projected US Cremation Rates

State	2019 % Cremations	2020 % Cremations	2025 % Cremations	2030 % Cremations
Alabama	32.6%	35.7%	46.1%	55.2%
Alaska	68.5%	71.6%	73.0%	76.2%
Arizona	67.7%	68.6%	70.6%	72.2%
Arkansas	42.9%	45.0%	53.9%	61.6%
California	64.2%	65.1%	68.9%	72.0%
Colorado	72.7%	73.8%	77.6%	80.7%
Connecticut	59.5%	61.0%	69.0%	76.1%
Delaware	55.2%	56.7%	65.1%	72.6%
Dist. of Columbia	50.8%	53.0%	55.6%	61.2%
Florida	67.8%	68.8%	73.3%	77.2%
Georgia	47.2%	49.2%	58.1%	65.7%
Hawaii	73.9%	75.0%	77.1%	79.1%
Idaho	65.6%	66.7%	70.5%	74.0%
Illinois	50.6%	53.6%	61.0%	66.9%
Indiana	47.0%	49.0%	57.3%	63.8%
Iowa	54.4%	56.6%	69.6%	79.8%
Kansas	56.0%	58.1%	67.2%	74.8%
Kentucky	35.1%	37.3%	47.2%	56.3%
Louisiana	37.1%	39.0%	48.8%	58.0%
Maine	78.2%	79.8%	85.2%	89.2%
Maryland	47.6%	49.4%	56.1%	62.3%
Massachusetts	49.5%	51.2%	56.6%	60.8%
Michigan	62.8%	64.4%	72.0%	78.2%
Minnesota	67.9%	69.9%	79.4%	86.8%
Mississippi	27.9%	29.1%	37.9%	46.1%
Missouri	50.9%	53.1%	63.2%	72.0%
Montana	76.5%	76.4%	81.8%	85.3%
Nebraska	53.8%	56.4%	66.0%	74.4%
Nevada	80.7%	81.3%	85.0%	87.6%
New Hampshire	76.9%	77.5%	83.4%	87.9%

Nearly 75% of New Hampshire residents choose cremation.

## Moultonborough Burials:

2018: 77% Chose Cremations  
3 Full 10 Cremations

2019: 62% Chose Cremations  
11 Burials 18 Cremations

2020: 56% Chose Cremations  
8 Burials 10 Cremations

2021: 90% Chose Cremations  
2 Burials 18 Cremations

NH is ranked #5



# Maximizing limited space



**A Columbarium is a structure with inbuilt niche spaces that store cremation urns.**

**With less space to work with each year, the columbarium will offer a solution to diminishing real estate.**

**A popular and affordable way to store remains**



# Grand Legacy Columbarium

Sunset Memorial & Stone Ltd



## Specifications

Grey granite base - polished top with edge detail  
- rock pitched sides

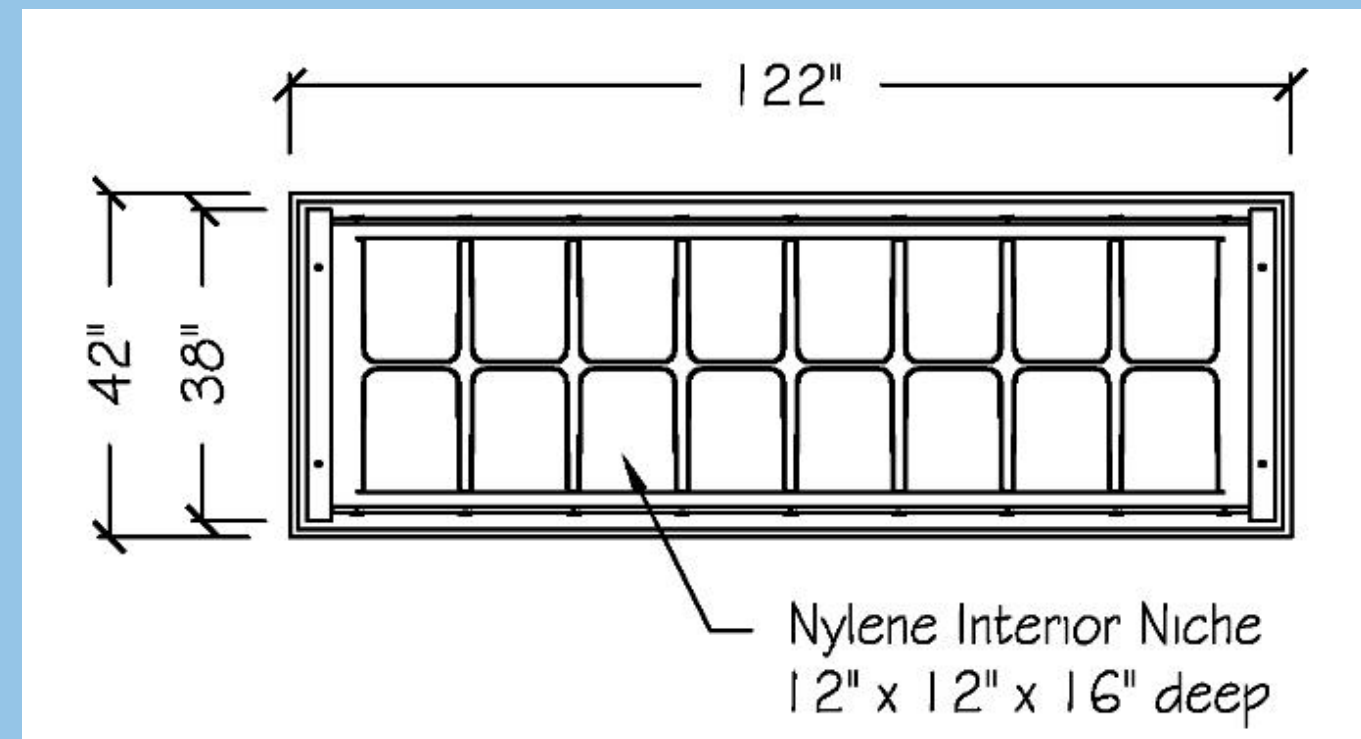
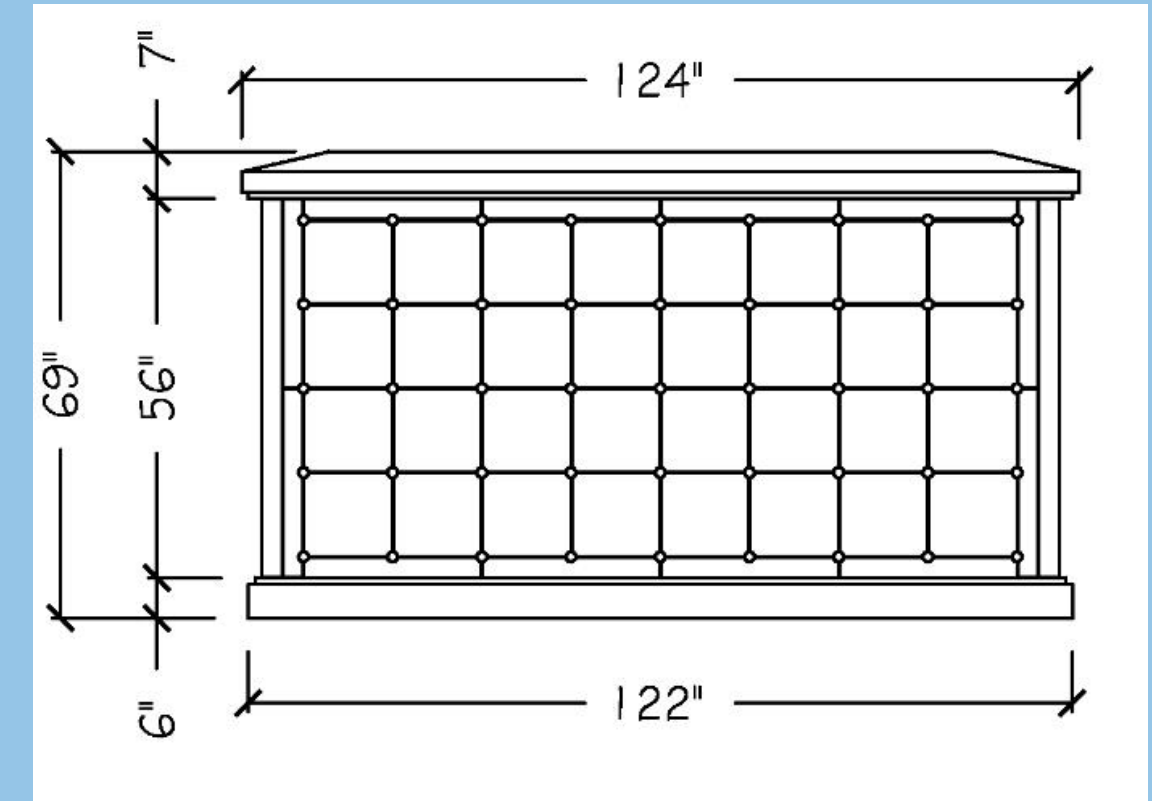
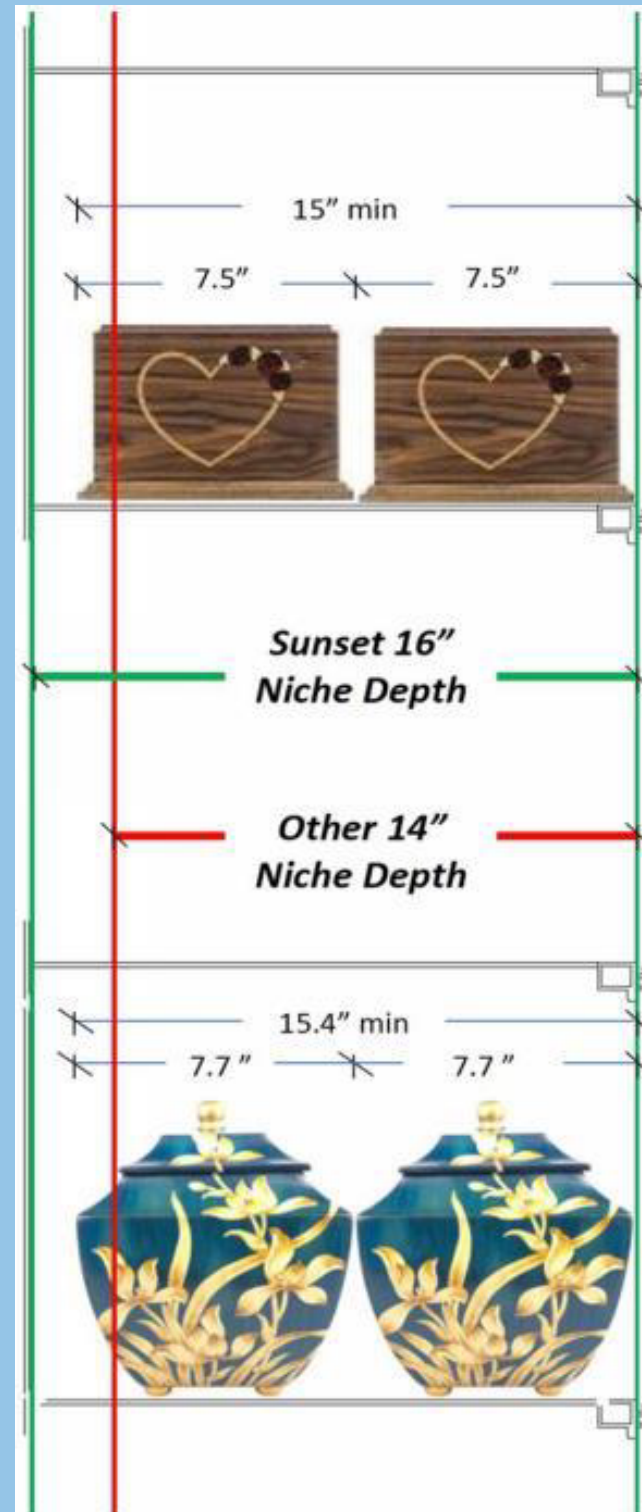
Grey granite roof - polished finish with sloping top and edge detail

Grey granite side walls - polished finish

Granite doors - polished surface  
optional colours available

Interior niche features Sunset's key locked security door

Total weight of Columbarium is 9,200 pounds



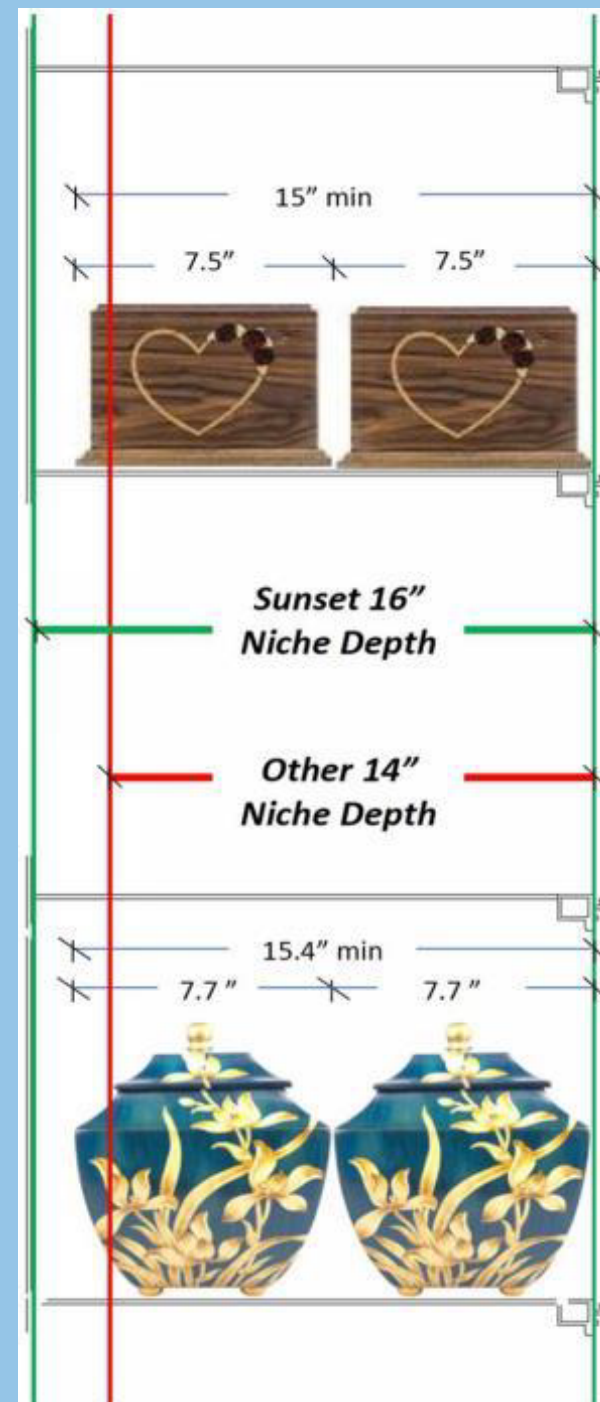


# The Niche

A secure resting spot for cremated remains

A standard niche can hold  
two urns

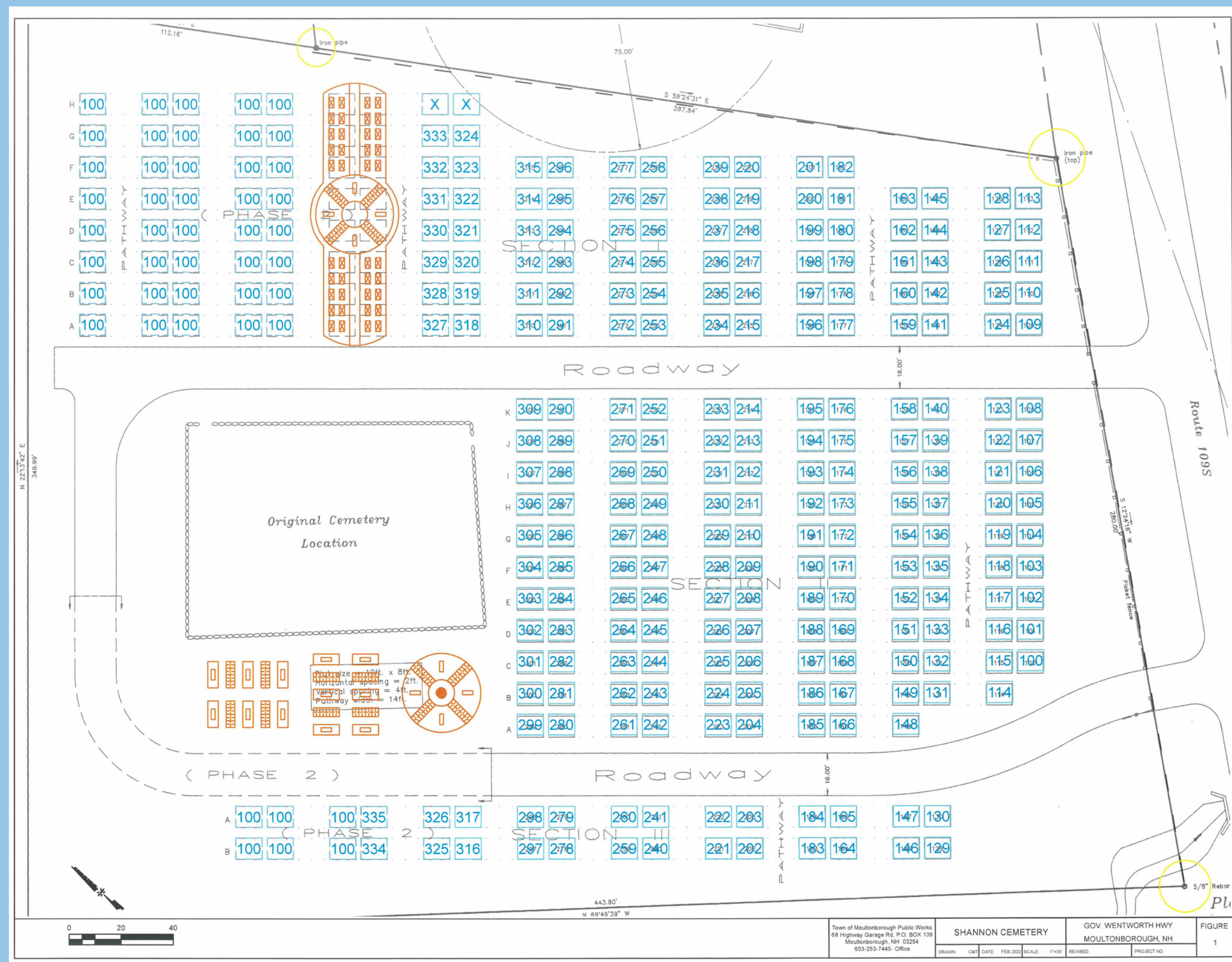
Aluminum, Nylene, Granite, Concrete





## Proposed Columbarium Information

- One 4x8 Columbarium consists of 64 Niche spaces (2 cremations each) for a potential capacity of 128 cremations per unit.
- Comparative ground coverage of 25'x30' = 750 square feet would include 4 columbaria units and 6 benches.
- 4 Columbarium units x 64 niches = 256 niche spaces (512 cremations).





# New Hampshire State Veterans Cemetery Boscawen, NH



Shawn Buck, Director:  
40% of their burials are in Columbarium's.

# Lakeview Cemetery Wolfeboro, NH



Niche Prices  
Upper Level: \$1,800  
Middle Level: \$1,700  
Lower Level: \$1,600  
Each Niche holds two urns

The Cremation Garden is located adjacent to the Columbarium. Price per grave is \$700. Each grave will accommodate one or two urns



# Bayside Cemetery Association Laconia, NH



## **COLUMBARIUM CREMATION NICHES:**

Single cremation above-ground niche \$800  
Double cremation above-ground niche \$1500  
(Includes maintenance, care, opening and closing of niche, and plaque)

# Mount Calvary Cemetery Somersworth, NH

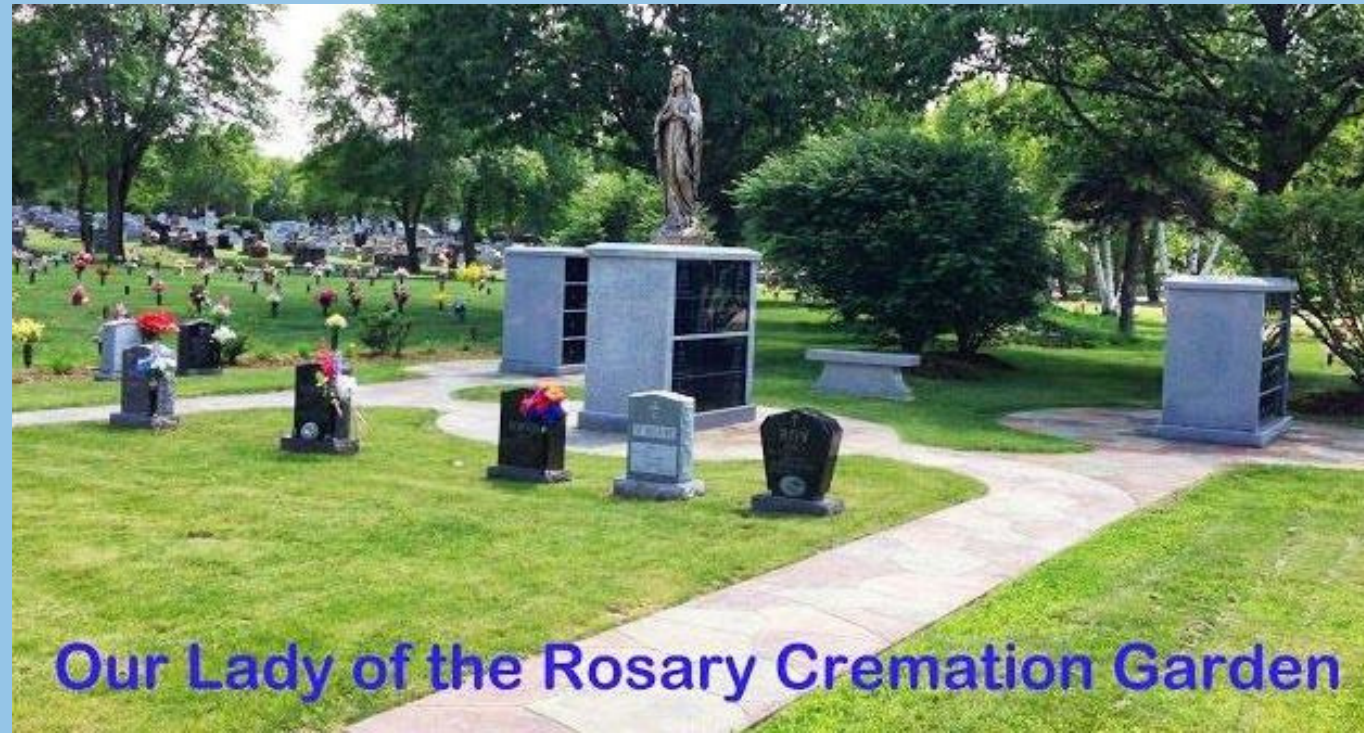


Cost for a Niche (12x12x12)  
is \$2,500 + \$200 Inurnment Fee  
\*Etching is not included



# Mount Calvary Cemetery

## Manchester, NH



### Pricing of Outdoor Columbarium Front Niche

Single Granite Front Niche

\$2,650

Double Granite Front

Niche \$4,175

The purchase of an Outdoor Columbarium  
Niche includes the following:  
The burial rights in the niche with perpetual care  
Opening and closing at the time of death  
Granite Engraving on the Niche Front

# Rochester Cemetery

## Rochester, NH



Columbarium Niche  
w/Engravable Granite Front

2 Cremation Urns per Niche

\$250 opening fee per cremation  
\$1,300 per Niche



# Pine Hill Cemetery

## Dover, NH

48 Niche Double-Sided Configuration



Resident	Non-Resident
Top Row \$1,200	\$1,300
\$1,100	\$1,200
\$1,000	\$1,100
Bottom Row \$900	\$1,000

\*Pricing does not include etching



Niche Dimension 15x10x20

Inurnment Fees  
Summer: (M-F \$250) (Sat. \$600)  
Winter:(M-F \$400)(Sat. \$800)



# Delivery & Installation



Our Lady of the Rosary Cremation Garden  
Rochester, NH

# The Importance of Landscaping



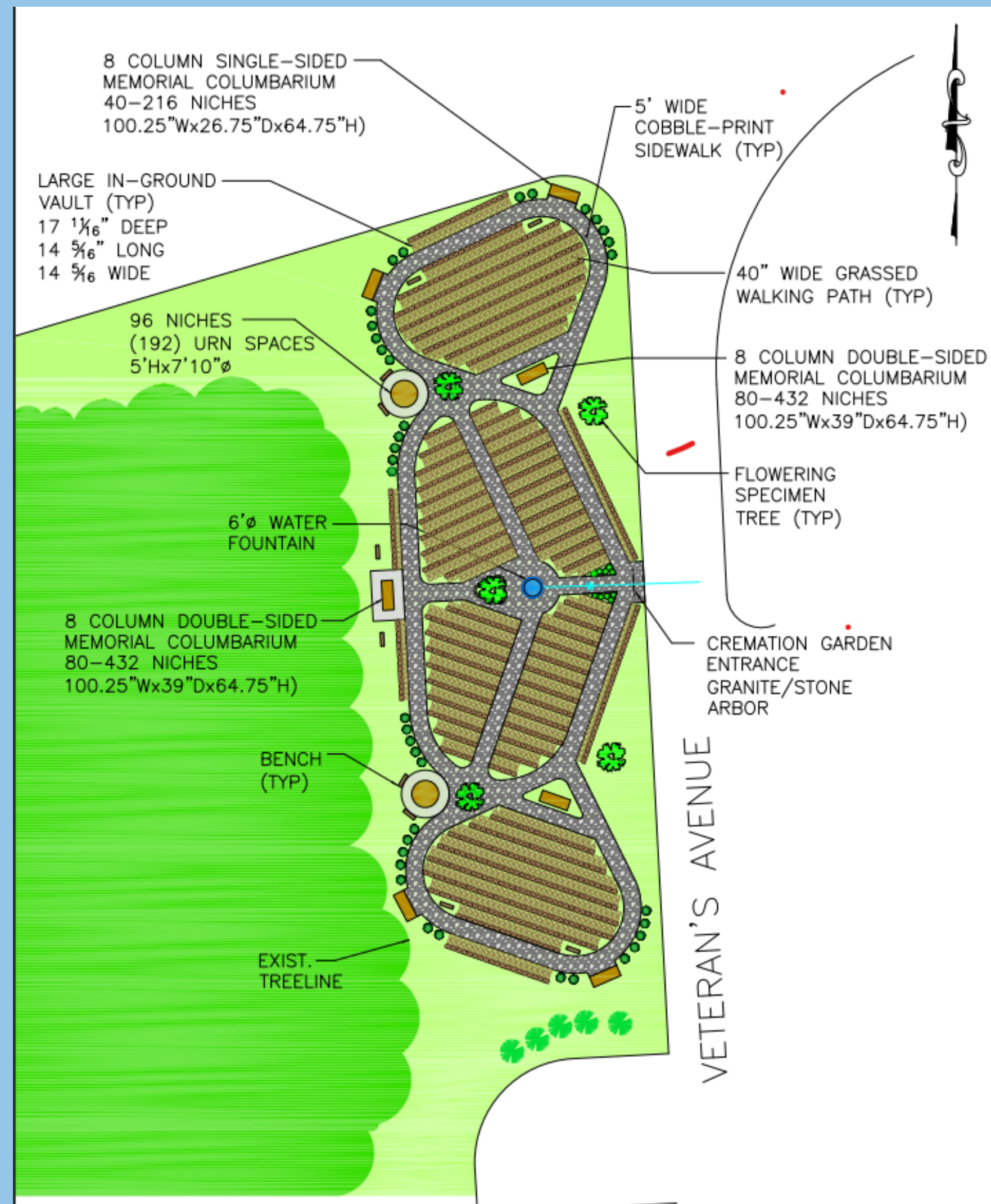
Forest Hills Cemetery  
Boston, MA



# Cremation Garden

## Grave layout plan for Forest Glade Cemetery's Cremation Garden Wakefield, MA.

Maximize space and offer families  
many types of memorilization.







PERSPECTIVE VIEW LOOKING NORTHEAST  
(NOT TO SCALE)

**COLUMBARIUM GARDEN PERSPECTIVE  
GATE OF HEAVEN CEMETERY  
ERIE, PA**

STEVENS & WARD INC. JOHNSBURG, OHIO 43031



# Watertown Engineering

Saint Patricks Cemetery, Lowell MA





# Cremation Garden

- Regardless of adding a columbarium, we really need to look at providing multiple burial options for optimizing the remaining land we have available. This would include Cremation Lots, Single Burial, and Double Burial Lots

## Single/Double Cremation Lot



Raymond C. Wixson Memorial Garden Gilford, NH \$700 for one cremation including inurment fees



# Updating Fee Schedule

- We also need to look at increasing our lot and burial fees.

- Burial Fees (Opening/Closing):

- Cremation Burial: \$400 weekdays, \$500 weekends/holidays

- Full Burials: \$700 weekdays, \$850 weekends/holidays

- Cemetery Lot Fees:

- Cremation Lot - Single/Double Urn (2x4): \$400

- Full Burial Lot – Single (4x10): \$700

- Full Burial Lot – Double (8x10): \$1,400

- Columbarium Niche – Single/Double Urn (12x12x15):

- \$650 (Bottom Row) - \$950 (Top Row) \*Dependent on total installation cost of unit\*

- Plus, Etching Fees (\$400-\$500): 2 Names/Dates