

579 Tenney Mountain Highway

Plymouth, NH 03264-3154

www.nhec.com

603-536-1800 / 800-698-2007

July 30, 2025

Subject: Scheduled Tree Re-clearing in Moultonborough, NH

As part of our ongoing efforts to maintain safe and reliable service, vegetation management work is scheduled to take place in the following locations within Moultonborough:

- Lees Mill Road Boat Launch
- Lee Road
- Lee Cemetery
- Mason Cemetery
- Brown Cemetery
- Life Safety Building

This maintenance is essential to ensure the continued safety and reliability of our infrastructure. Work will be conducted by qualified tree contractors in the next few months.

If you have any questions or require additional information, please feel free to contact NHEC.

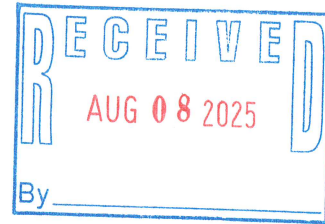
Thank you for your attention and cooperation.

Sincerely,

Vegetation Management Dept

vegetationmanagement@nhec.com

1-800-698-2007



July 30, 2025

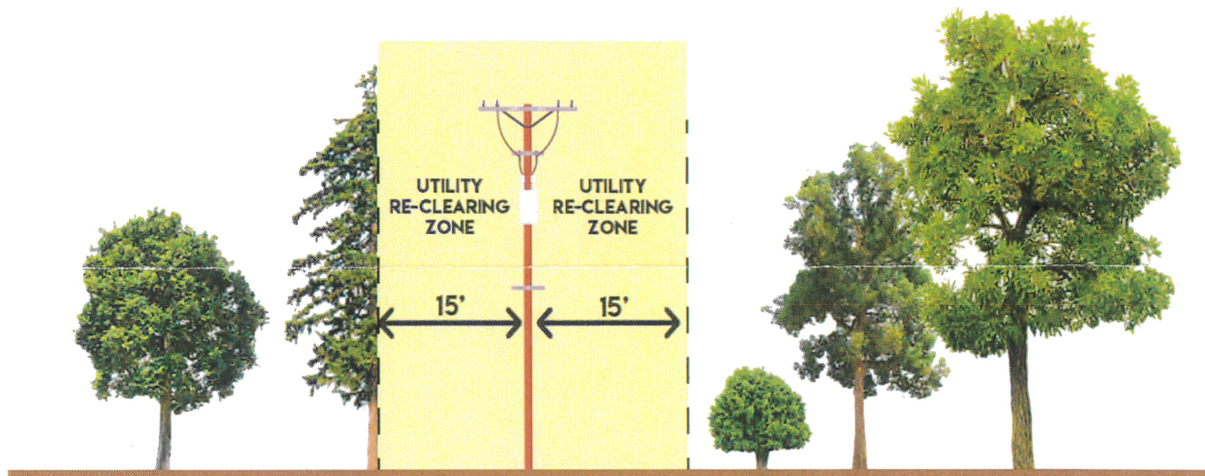
In New Hampshire trees are the #1 cause of power outages. That's why New Hampshire Electric Cooperative (NHEC) is continually re-clearing and maintaining the "rights-of-way" where our power lines run.

PLEASE NOTE A RIGHT-OF-WAY RE-CLEARING PROJECT IS SCHEDULED IN YOUR SERVICE OR PROPERTY AREA IN THE 2025 CALENDAR YEAR.

If you are a NHEC member, you will receive an automated phone call prior to the start of the re-clearing project. To ensure you receive our call, please make sure we have an updated phone number associated with your account. **To update or confirm your phone number, please call us at 1 (800) 698-2007 or email solutions@nhec.com**

What you can expect

Under the supervision of our arborists, qualified tree service companies are contracted to clear NHEC rights-of-way. We re-clear 15 feet on both sides of the distribution power line, ground to sky. In some instances, we may cut further to make a proper arboricultural cut. While performing our re-clearing NHEC tree contractors will evaluate your service line. If there is apparent wear or hard contact showing on the service line to your house, the area will be minimally trimmed.



Tree crews most commonly use mechanical methods like chainsaws, mowers, mechanical trimmers, bucket trucks and chippers to clear brush, trees, and limbs from the right-of-way corridor. Read more about NHEC's rights-of-way maintenance at www.nhec.com/vegetation.

For questions email us at vegetationmanagement@nhec.com, or call NHEC's member solutions team at 1 (800) 698-2007.

Thank you!