

REVISIONS			
NUMBER	DATE	BY	DESCRIPTION
3	07/17/19	RHK	REVISE BOAT RAMP AND DOCK; REVISE DEWATERING/STOCKPILE AREAS
2	05/13/19	RHK	REVISE DRAWING NOTES; REVISE TITLE BLOCK
1	03/26/19	RHK	ADD BOAT RAMP AND DOCK FOR NHDES WETLANDS PERMIT AMENDMENT

NOT FOR CONSTRUCTION

**KVPartners**  
CONSULTING ENGINEERS

PO BOX 7721  
GILFORD, NH 03247  
TEL: (603) 513-1909

PO BOX 432  
NEW BOSTON, NH 03070  
TEL: (603) 413-6550

www.kvpllc.com

DATE:	08/15/18
SCALE:	AS SHOWN
DESIGNED BY:	RHK
DRAWN BY:	NMT
CHECKED BY:	RHK
APPROVED BY:	RHK

STATES LANDING BEACH  
WATERFRONT IMPROVEMENTS PROJECT  
MOULTONBOROUGH, NEW HAMPSHIRE

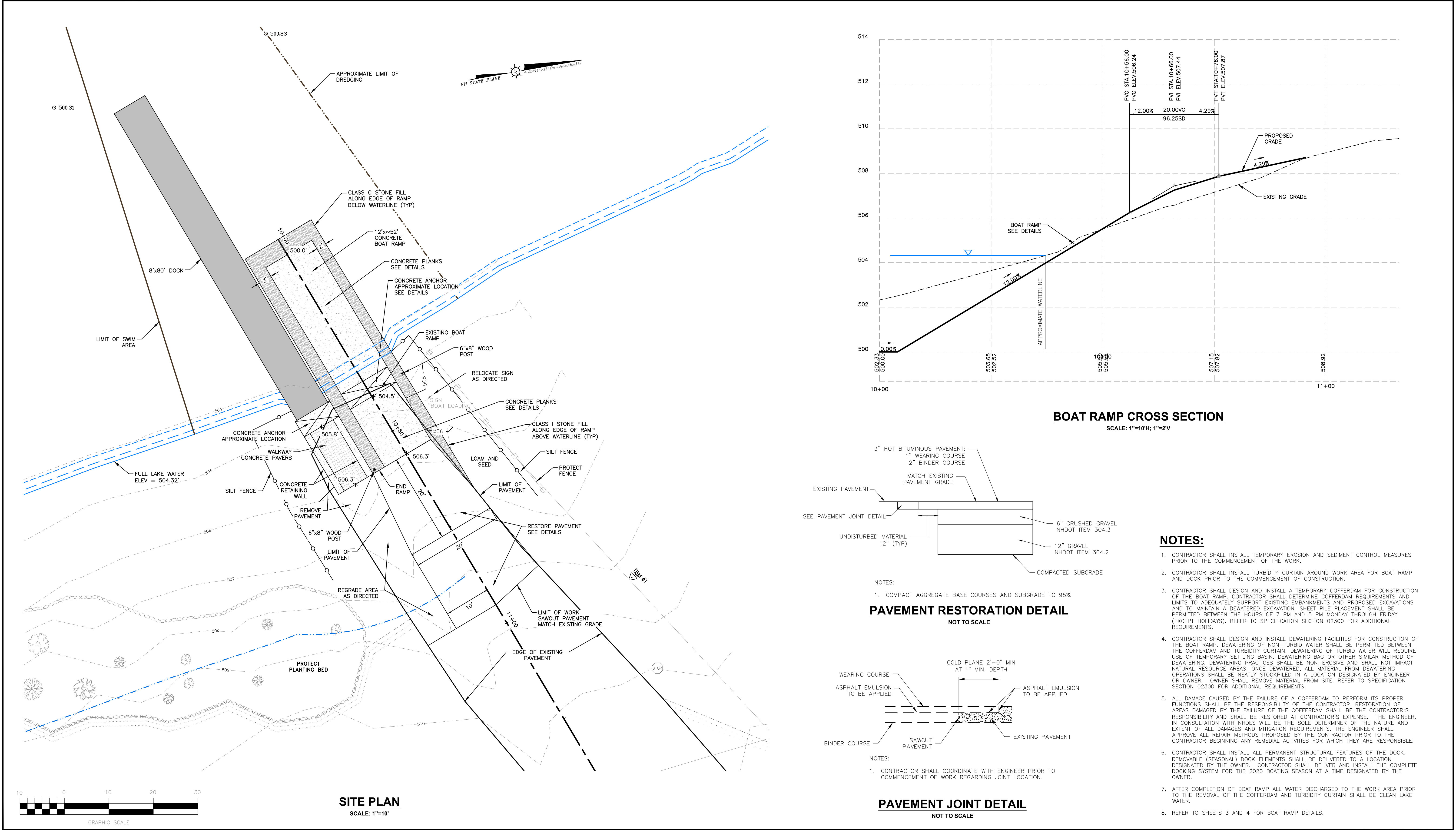
SITE PLAN AND CROSS SECTIONS

SHEET NO.

1

SHEET 1 OF 5





REVISIONS			
NUMBER	DATE	BY	DESCRIPTION

NOT FOR CONSTRUCTION

**KV Partners**  
CONSULTING ENGINEERS

PO BOX 7721  
GILFORD, NH 03247  
TEL: (603) 513-1909

PO BOX 432  
NEW BOSTON, NH 03070  
TEL: (603) 413-6550

www.kvpllc.com

DATE:	07/17/19
SCALE:	AS SHOWN
DESIGNED BY:	RHK
DRAWN BY:	NMT
CHECKED BY:	RHK
APPROVED BY:	RHK

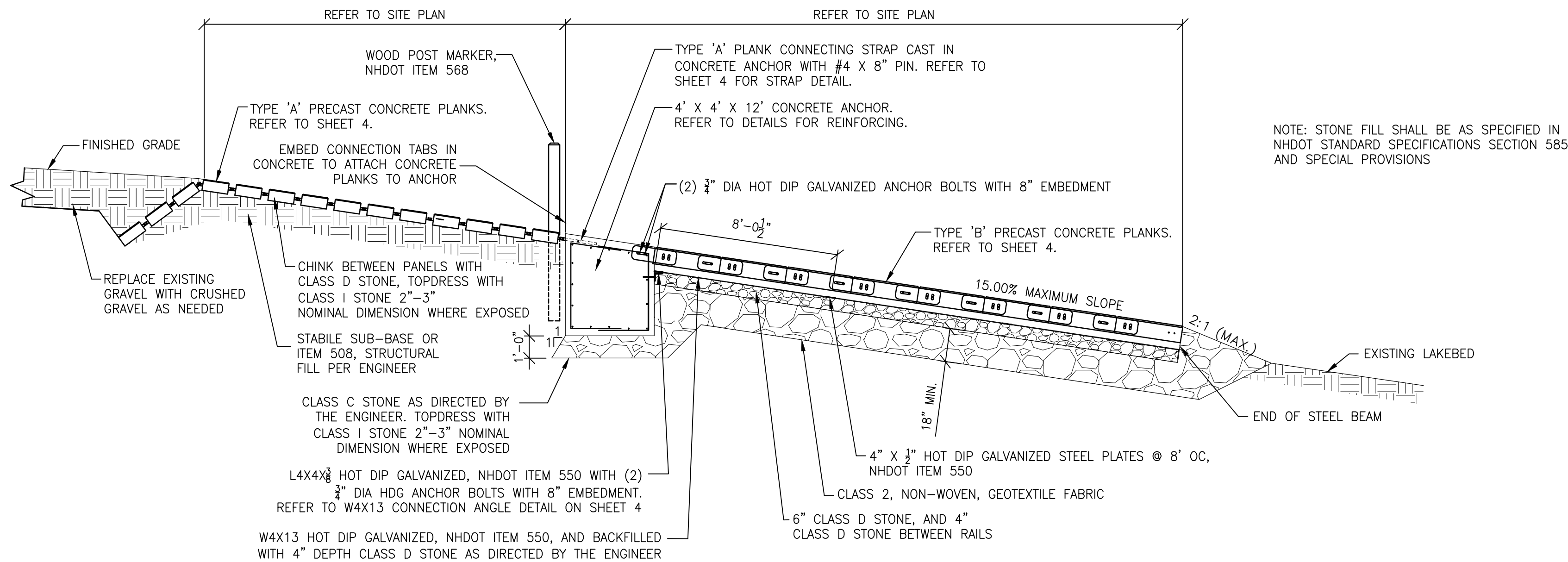
**STATES LANDING BEACH  
WATERFRONT IMPROVEMENTS PROJECT  
MOULTONBOROUGH, NEW HAMPSHIRE**

**DOCK AND BOAT RAMP SITE PLAN**

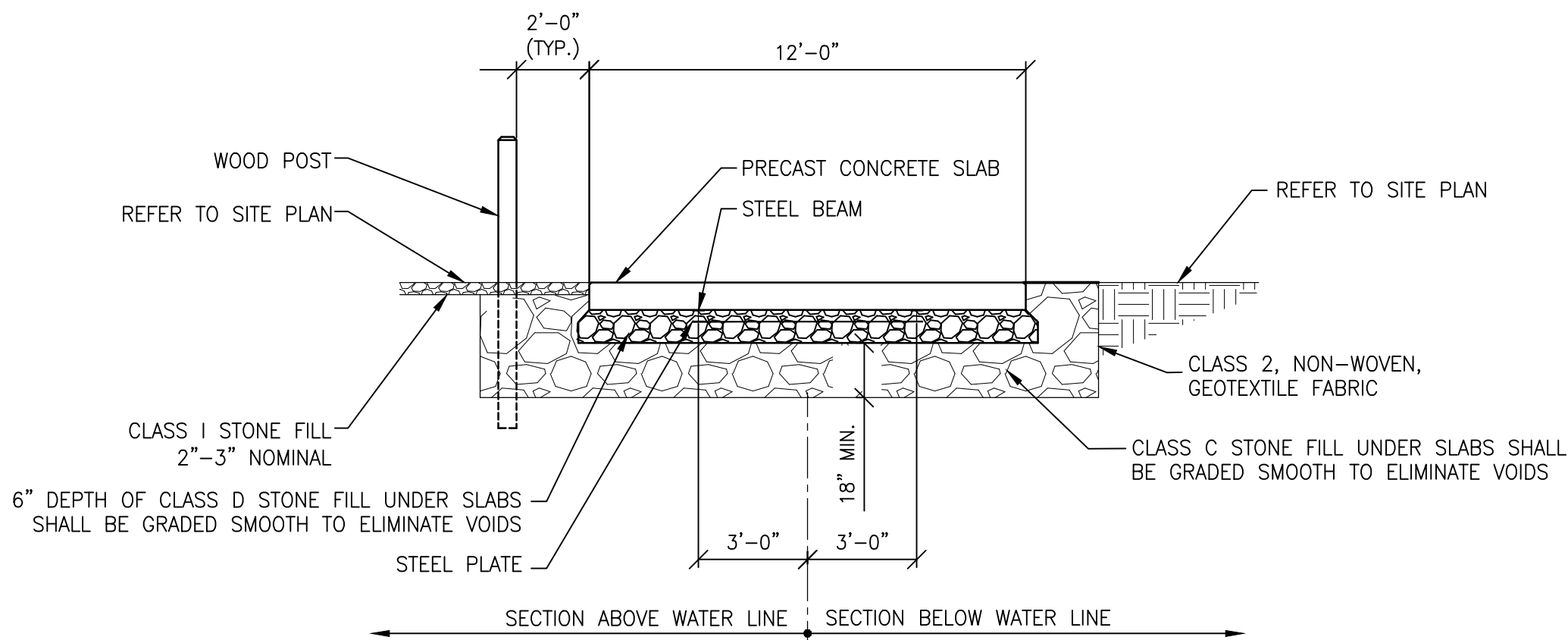
SHEET NO.

**2**

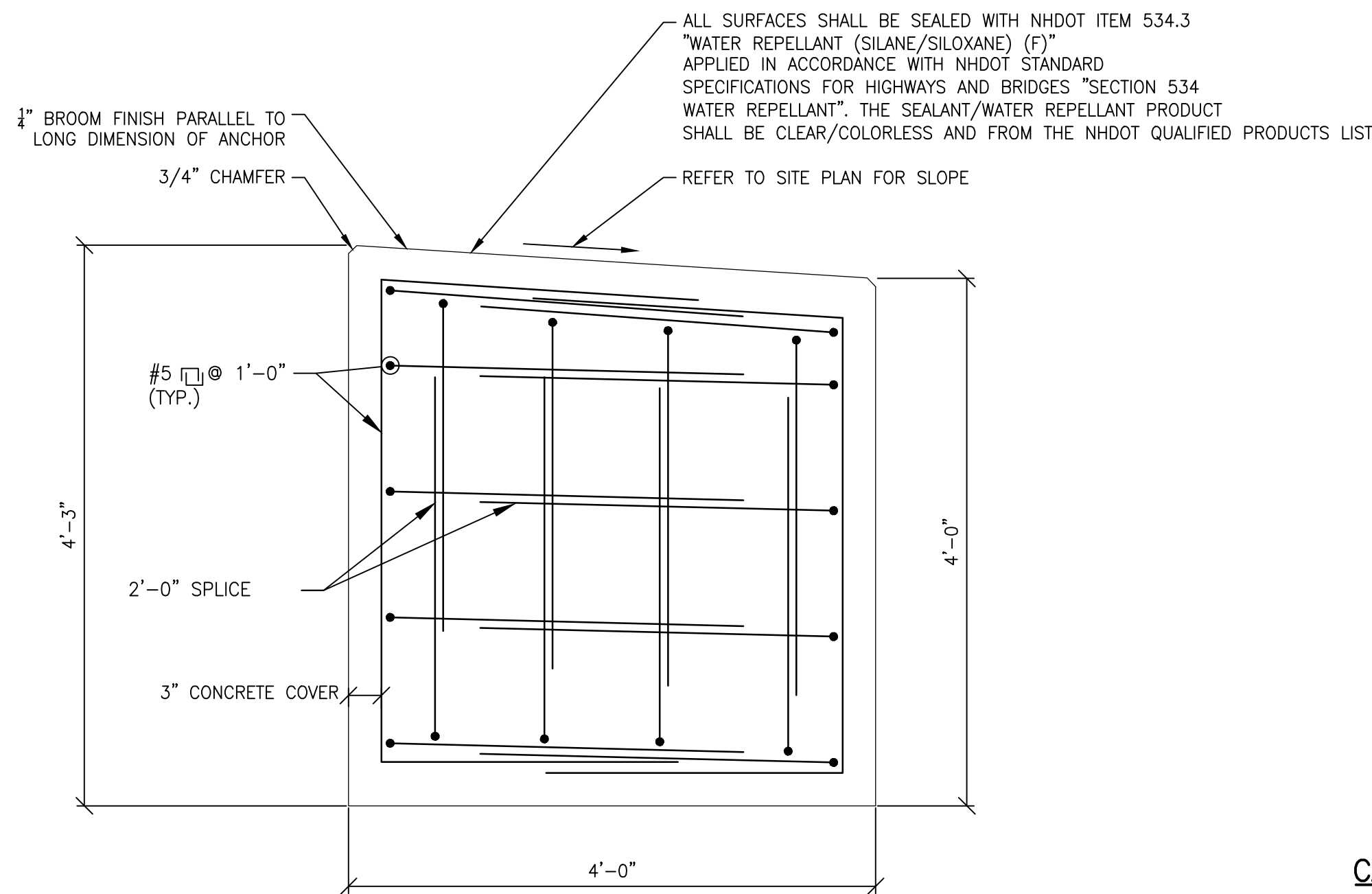
**SHEET 2 OF 5**



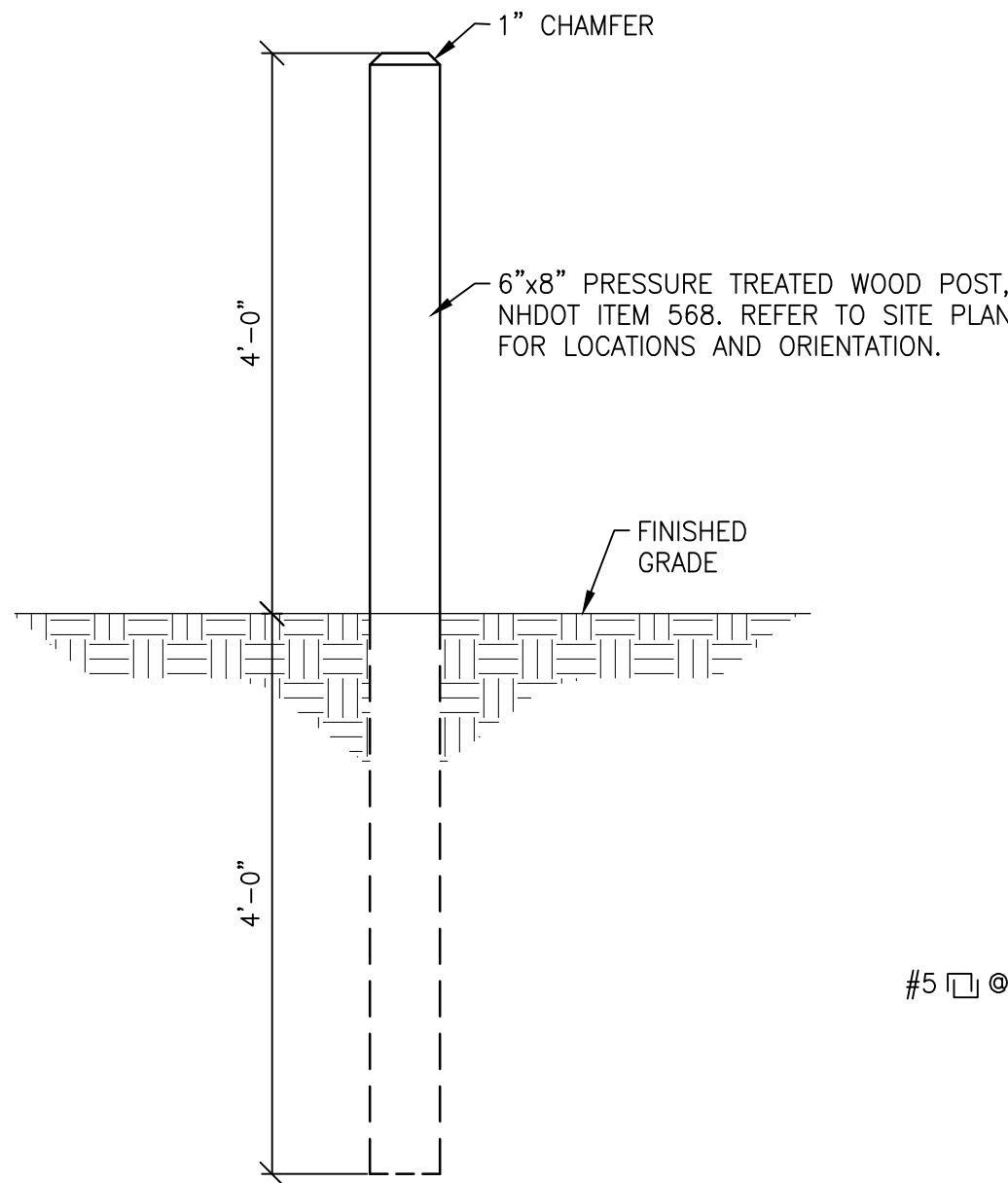
LONGITUDINAL RAMP SECTION



TYPICAL SECTION



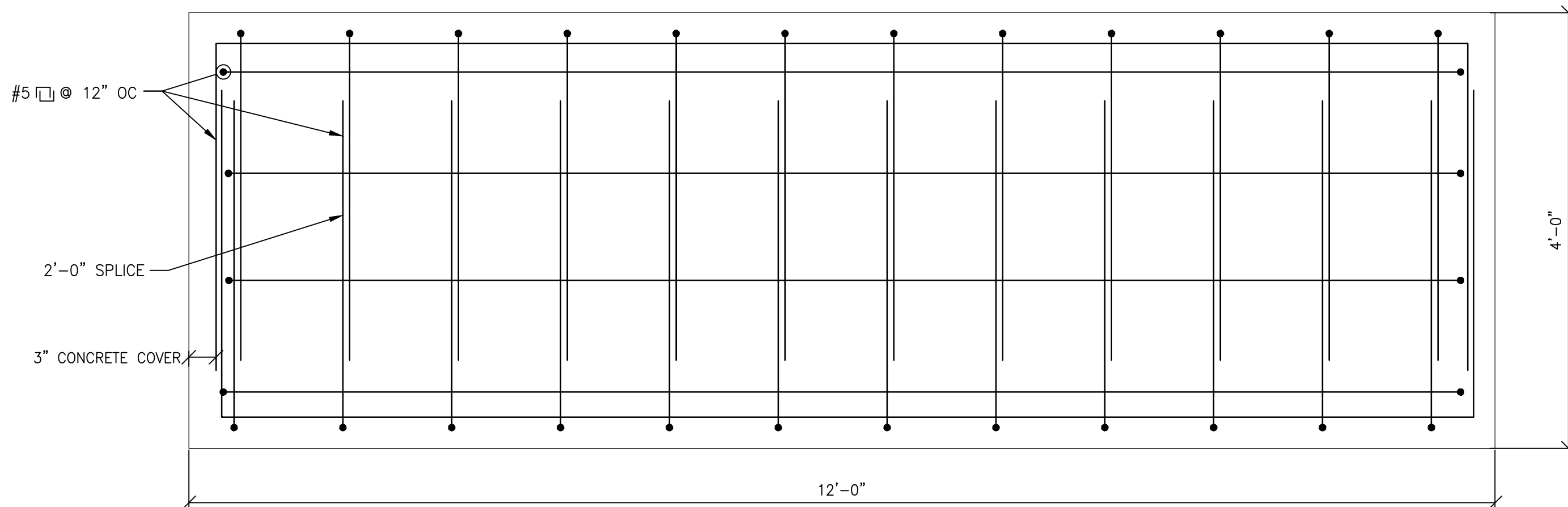
PRECAST CONCRETE ANCHOR END REINFORCING DETAIL



WOOD POST DETAIL

CAST-IN-PLACE CONCRETE ANCHOR NOTES

1. CONCRETE SHALL BE NHDOT ITEM 520.001, CLASS AAA, 5000 PSI AT 28 DAYS.
2. REINFORCING STEEL SHALL BE GRADE 60, EPOXY COATED, WITH 3" CONCRETE COVER.
3. ALL EMBEDDED STEEL, CONNECTING PLATES, BOLTS AND HARDWARE SHALL BE ASTM A36 HOT DIP GALVANIZED.



PRECAST CONCRETE ANCHOR REINFORCING PLAN

REVISIONS			
NUMBER	DATE	BY	DESCRIPTION

NOT FOR CONSTRUCTION

FISHER ENGINEERING, P.C.  
686 BELKNAP MOUNTAIN ROAD  
GILFORD, NEW HAMPSHIRE

KVPartners  
CONSULTING ENGINEERS

PO BOX 7721  
GILFORD, NH 03247  
TEL: (603) 513-1909

PO BOX 432  
NEW BOSTON, NH 03247  
TEL: (603) 413-6550

www.kvplic.com

DATE:	7/24/19
SCALE:	NTS
DESIGNED BY:	JBF
DRAWN BY:	JBF
CHECKED BY:	JBF
APPROVED BY:	RHK

STATES LANDING BEACH  
WATERFRONT IMPROVEMENTS PROJECT  
MOULTONBOROUGH, NEW HAMPSHIRE

BOAT RAMP SECTIONS

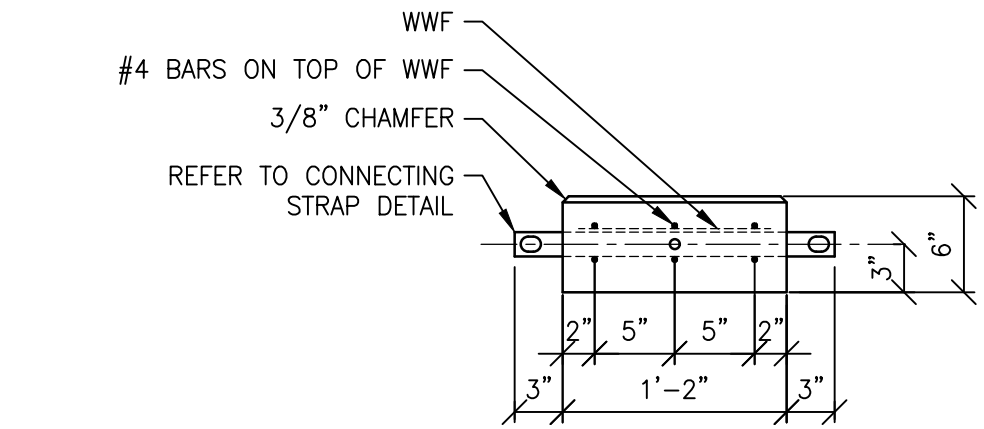
SHEET NO.

3

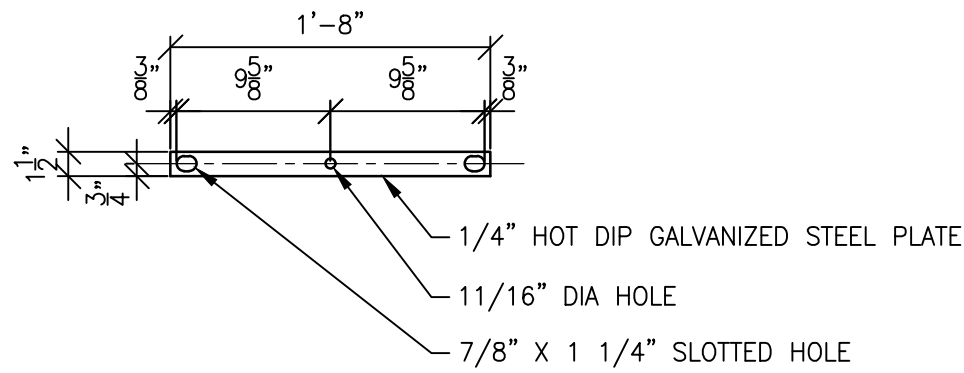
SHEET 3 OF 5

PRECAST CONCRETE PLANK NOTES

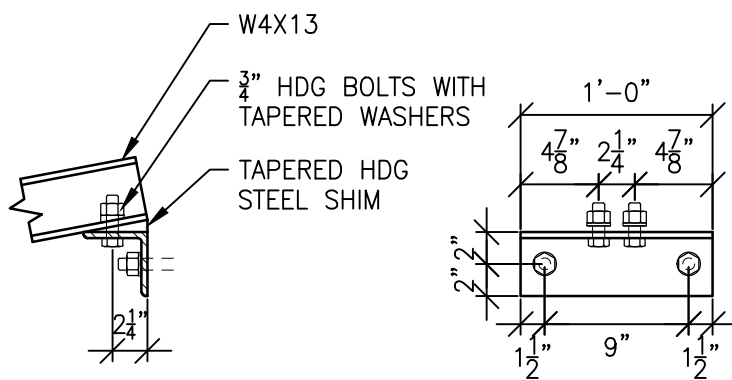
1. CONCRETE SHALL BE NHDOT ITEM 520.001, CLASS AAA, 5000 PSI AT 28 DAYS.
2. REINFORCING STEEL SHALL BE GRADE 60, EPOXY COATED, WITH 2 1/2" CONCRETE COVER.
3. ALL EMBEDDED STEEL, CONNECTING PLATES, BOLTS AND HARDWARE SHALL BE ASTM A36 HOT DIP GALVANIZED.
4. ALL TYPE 'B' PLANKS SHALL BE COLORED BLACK DURING PRODUCTION WITH LANKESS, BAYFERROX 330, PIGMENT BLACK 11, IRON OXIDE DYE.
5. ALL SURFACES OF THE PLANKS SHALL BE SEALED WITH NHDOT ITEM 534.3 "WATER REPELLANT (SILANE/SILOXANE) (F)" APPLIED IN ACCORDANCE WITH NHDOT STANDARD SPECIFICATIONS FOR HIGHWAYS AND BRIDGES "SECTION 534 WATER REPELLANT". THE SEALANT/WATER REPELLANT PRODUCT SHALL BE CLEAR/COLORLESS AND FROM THE NHDOT QUALIFIED PRODUCTS LIST.
6. PLANKS SHALL HAVE A LONGITUDINAL 1/4" BROOM FINISH.
7. FASTENERS AND CONNECTORS ARE TYPICAL FOR SIMILAR CONDITIONS.



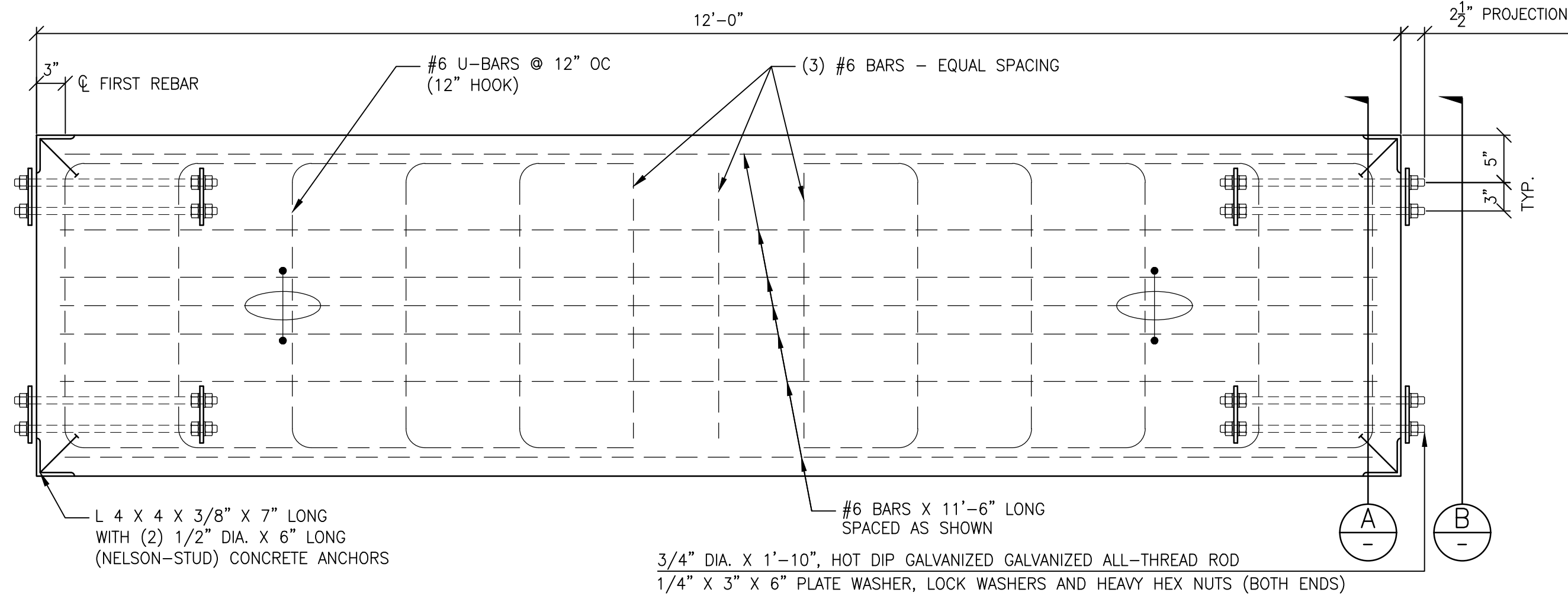
SECTION C



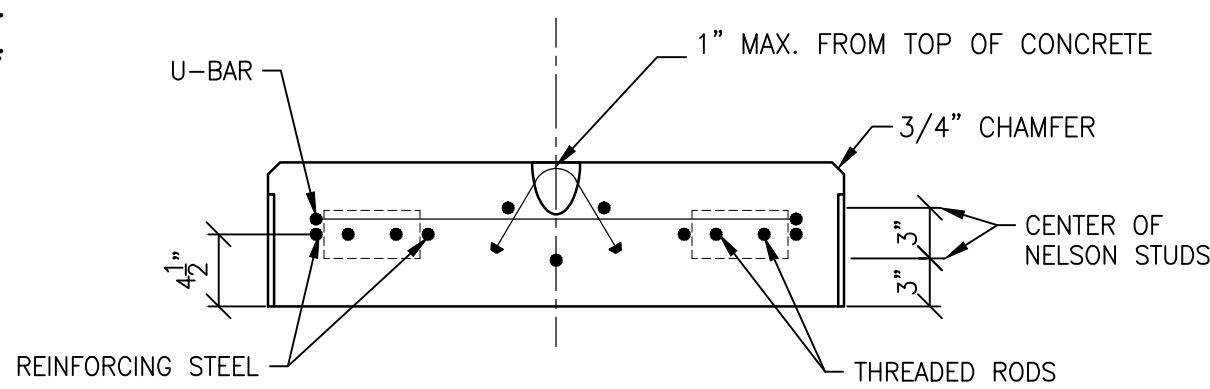
CONNECTING STRAP DETAIL  
SUBSIDIARY TO NHDOT ITEM 528



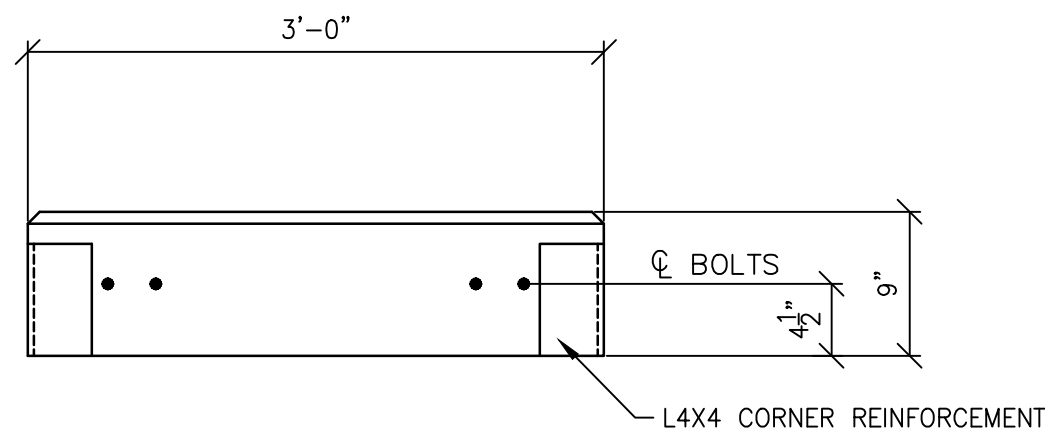
W4X13 CONNECTION ANGLE



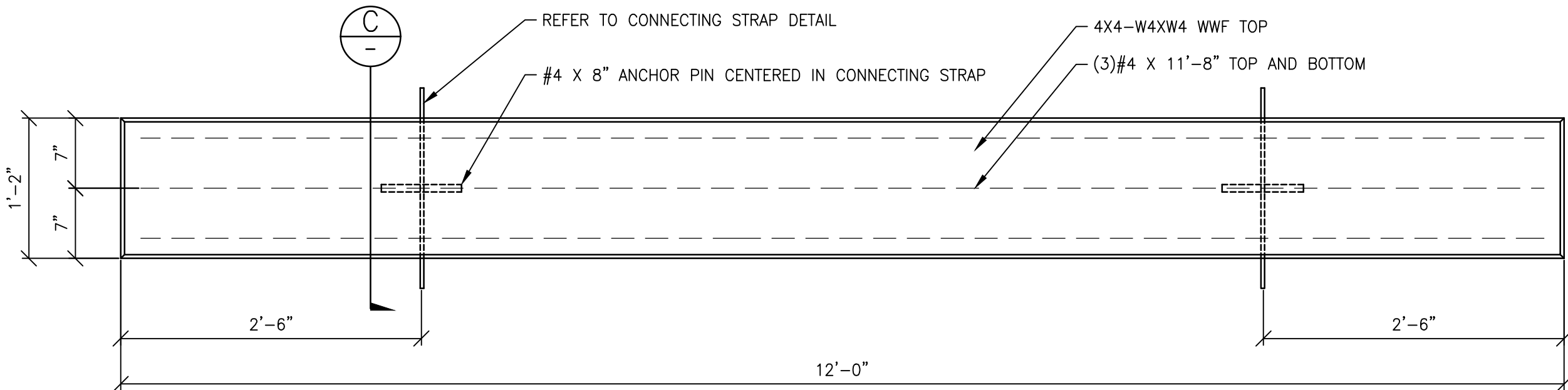
TYPE 'B' PLANK REINFORCING



SECTION A

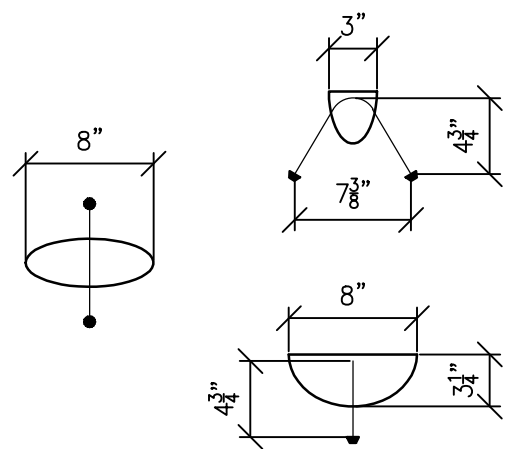


END VIEW  
(SHOWN WITHOUT CONNECTING PLATE) B

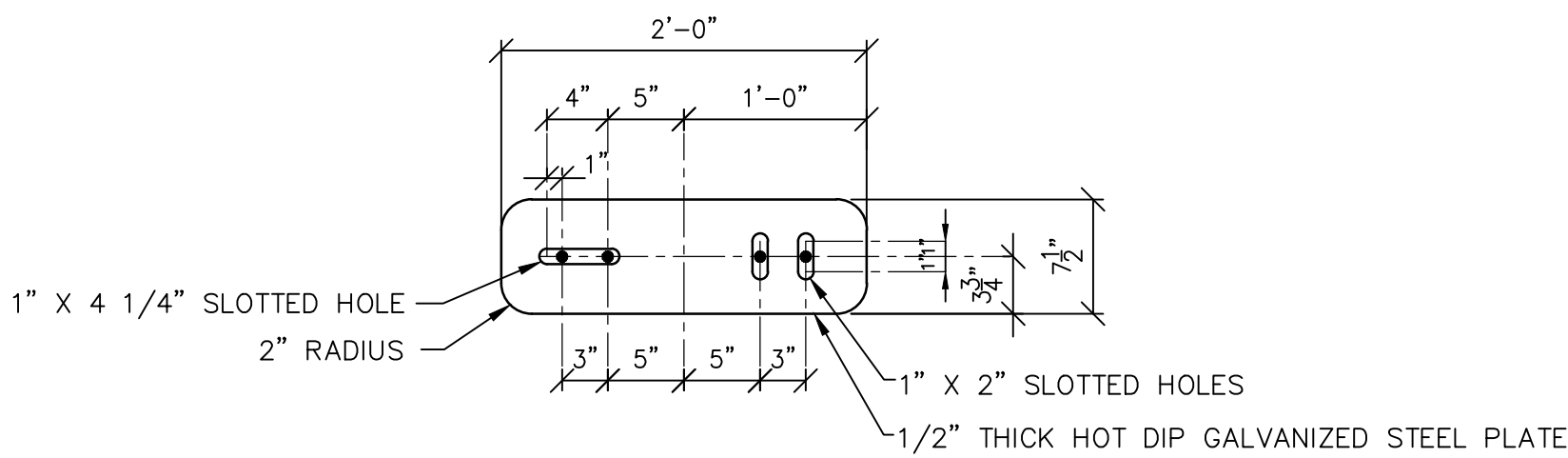


PLAN

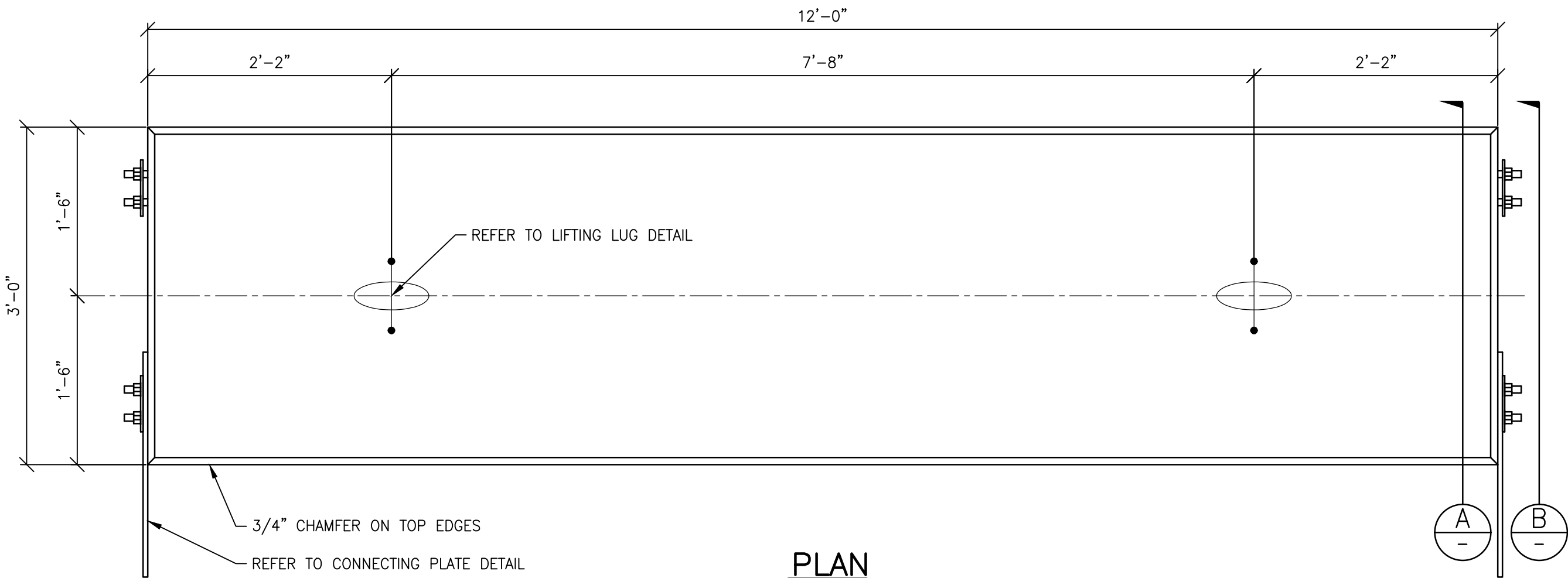
TYPE 'A' PRECAST CONCRETE PLANK DETAILS, NHDOT ITEM 528  
(APPROXIMATE PLANK WEIGHT = 1100 POUNDS)



LIFTING LUG DETAIL  
(AS MANUFACTURED BY DAYTON-RICHMOND)  
NOT TO SCALE



CONNECTING PLATE DETAIL  
SUBSIDIARY TO NHDOT ITEM 528



PLAN

TYPE 'B' PRECAST CONCRETE PLANK DETAILS, NHDOT ITEM 528  
(APPROXIMATE PLANK WEIGHT = 4100 POUNDS)

REVISIONS			
NUMBER	DATE	BY	DESCRIPTION

NOT FOR CONSTRUCTION

FISHER ENGINEERING, P.C.  
686 BELKNAP MOUNTAIN ROAD  
GILFORD, NEW HAMPSHIRE

**KVP**Partners  
CONSULTING ENGINEERS

PO BOX 7721  
GILFORD, NH 03247  
TEL: (603) 513-1909

PO BOX 432  
NEW BOSTON, NH 03247  
TEL: (603) 413-6550

www.kvpllc.com

DATE:	7/24/19
SCALE:	1"=1'-0"
DESIGNED BY:	JBF
DRAWN BY:	JBF
CHECKED BY:	JBF
APPROVED BY:	RHK

STATES LANDING BEACH  
WATERFRONT IMPROVEMENTS PROJECT  
MOULTONBOROUGH, NEW HAMPSHIRE

PRECAST CONCRETE PLANKS DETAILS

SHEET NO.

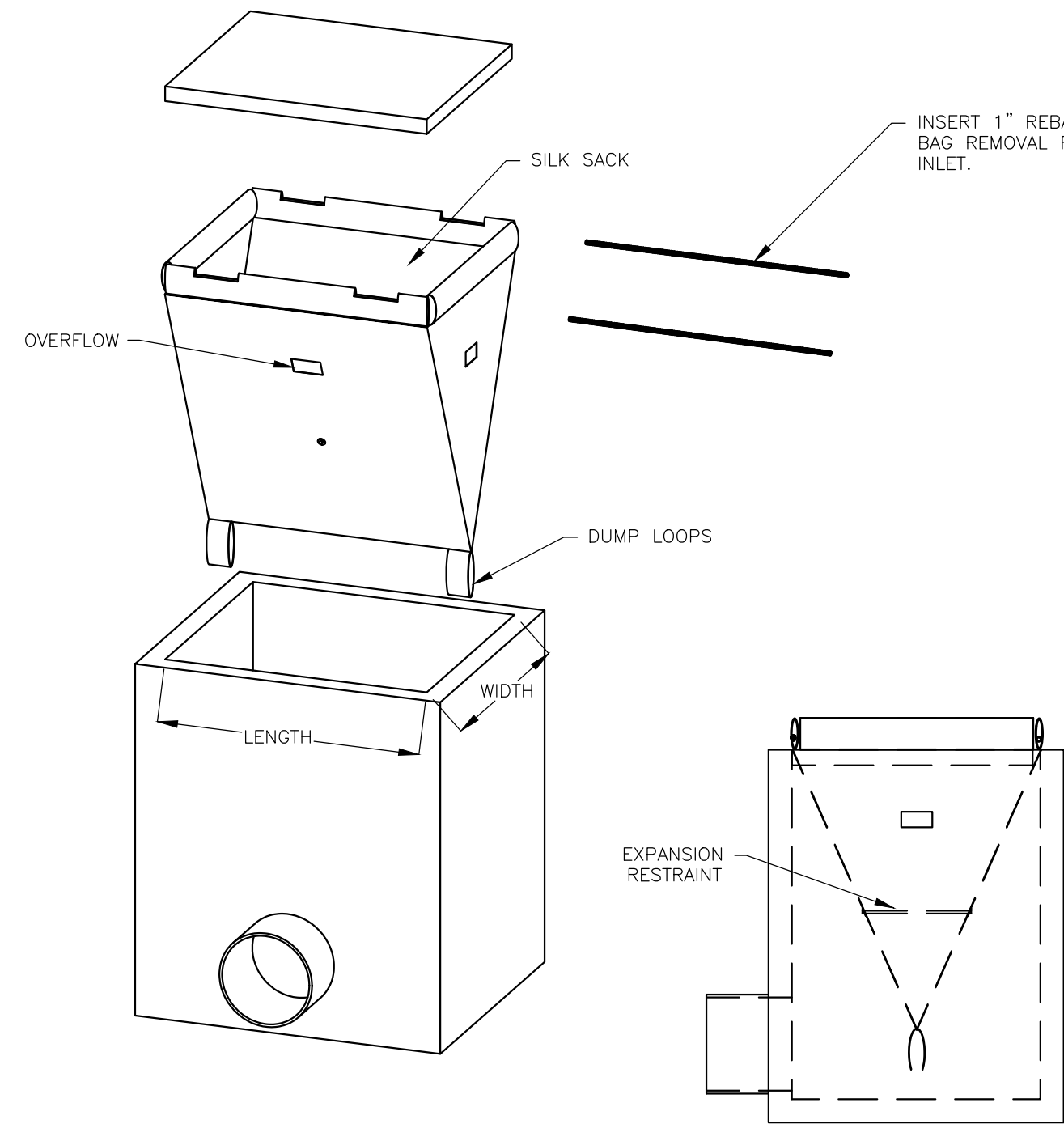
4

SHEET 4 OF 5



GENERAL NOTES

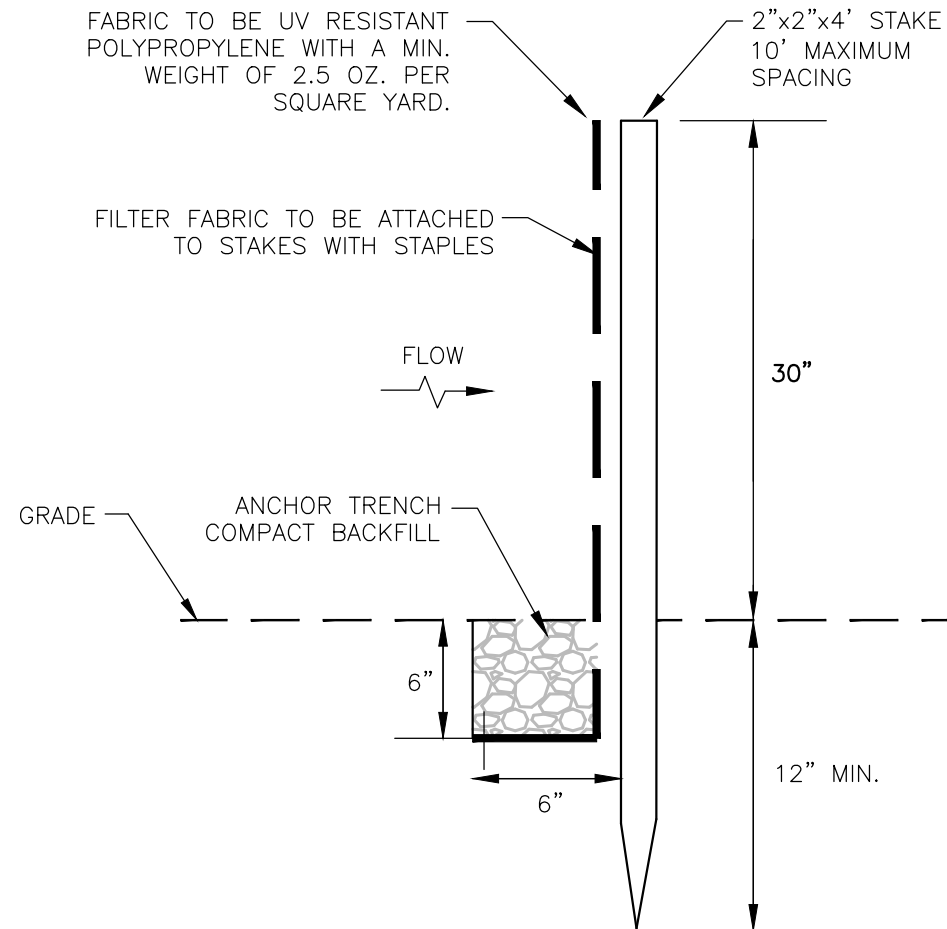
1. BASE MAP INFORMATION IS PROVIDED BY DAVID M. DOLAN ASSOCIATES P.C., MOULTONBOROUGH, NEW HAMPSHIRE. TOPOGRAPHIC SURVEY COMPLETED IN JUNE 2015. HYDROGRAPHIC SURVEY COMPLETED IN MARCH 2014.
2. BASIS OF ELEVATION OF SURVEYS IS LAKE ELEVATION OF 502.64 FEET ON MARCH 5, 2014 PER NHDES. SHORELINE IS BASED ON LAKE WINNIPESAUKEE FULL LAKE ELEVATION OF 504.32 FEET.
3. FOR BORING LOGS REFER TO REQUEST FOR PROPOSALS. BORING LOCATIONS SHOWN ON DRAWING PROVIDED ARE APPROXIMATE.
4. CONTRACTOR SHALL VERIFY ALL RELEVANT ANGLES, LENGTHS, AND ELEVATIONS AND THE LOCATION OF ALL PROPOSED FACILITIES PRIOR TO CONSTRUCTION. CONTRACTOR SHALL IMMEDIATELY NOTIFY THE ENGINEER OF ANY CONFLICTS OR DISCREPANCIES FOUND IN THE PROPOSED DESIGN PRIOR TO THE COMMENCEMENT OF THE WORK.
5. THE LOCATION OF EXISTING UTILITIES AND SUBSURFACE STRUCTURES AS SHOWN ON THE DRAWINGS ARE APPROXIMATE ONLY. THE CONTRACTOR SHALL NOTIFY THE ENGINEER AND APPROPRIATE UTILITY AUTHORITY OF ANY DISCREPANCY WITH THE DRAWINGS. NEITHER THE ENGINEER NOR THE OWNER WARRANTS OR GUARANTEES THE CONDITIONS SHOWN ON THE DRAWINGS.
6. CONTRACTOR SHALL VERIFY THE LOCATION OF ALL SUBSURFACE STRUCTURES AND UTILITIES THROUGH THE APPROPRIATE AGENCY. THE CONTRACTOR SHALL VERIFY THE LOCATION OF ALL EXISTING UTILITIES PRIOR TO ANY EXCAVATION. THE CONTRACTOR SHALL CALL THE DIG-SAFE CENTER (1-888-344-7233) AT LEAST 72 BUSINESS HOURS PRIOR TO ANY EXCAVATION.
7. CONTRACTOR SHALL MAINTAIN TRAFFIC IN A SAFE MANNER AT ALL TIMES DURING CONSTRUCTION AND IN ACCORDANCE WITH THE MANUAL ON UNIFORM TRAFFIC CONTROL DEVICES (MUTCD).
8. CONTRACTOR SHALL COMPLY WITH ALL PERMITS ISSUED FOR THE PROJECT.
9. CONTRACTOR SHALL CONFINE ALL OPERATIONS AND ACTIVITIES FOR CONSTRUCTION PURPOSES WITHIN THE LIMITS OF WORK SHOWN ON THE DRAWINGS.
10. DURING NON-WORKING HOURS, CONTRACTOR SHALL SECURE ALL EQUIPMENT AND MATERIALS WITHIN THE LIMITS OF WORK.
11. CONTRACTOR SHALL BE RESPONSIBLE FOR ANY DAMAGE TO EXISTING PAVEMENT, ROADWAYS, SIGNS, CURBS, SIDEWALKS, DRIVEWAYS, MAILBOXES, FENCES, PLANTINGS OR OTHER PHYSICAL FEATURES CAUSED BY THE CONTRACTOR'S ACTIVITIES AND SHALL REPAIR THEM AT NO ADDITIONAL COST TO THE OWNER. ALL AREAS BEYOND THE LIMITS OF CONSTRUCTION WHICH ARE DISTURBED BY THE CONTRACTOR SHALL BE RESTORED TO THEIR ORIGINAL CONDITION AT NO ADDITIONAL COST TO THE OWNER.
12. CONTRACTOR SHALL TAKE PRECAUTIONS DURING CONSTRUCTION TO MINIMIZE THE AMOUNT OF DEBRIS THAT COLLECTS IN CATCH BASINS, CULVERTS AND MANHOLES. THE CONTRACTOR SHALL CLEAN ALL CATCH BASINS, CULVERTS AND MANHOLES AFFECTED BY CONSTRUCTION IN ORDER TO MAINTAIN AN OPERATING SYSTEM.
13. ALL WORK SHALL BE DONE IN ACCORDANCE WITH ALL APPLICABLE LOCAL, STATE AND FEDERAL CODES. THE CONTRACTOR SHALL BE RESPONSIBLE FOR OBTAINING ALL REQUIRED PERMITS FROM APPLICABLE GOVERNMENTAL AGENCIES, INCLUDING THE OWNER, PRIOR TO THE START OF ANY CONSTRUCTION.
14. IN THE EVENT THE CONTRACTOR ENCOUNTERS EXISTING MATERIAL REASONABLY BELIEVED TO BE HAZARDOUS WHICH HAS NOT BEEN RENDERED HARMLESS, THE CONTRACTOR SHALL IMMEDIATELY STOP WORK IN THE AFFECTED AREA AND REPORT THE CONDITION TO THE OWNER AND ENGINEER. WORK IN THE AFFECTED AREA SHALL NOT RESUME UNTIL WRITTEN VERIFICATION BY THE OWNER THAT THE MATERIAL HAS BEEN REMOVED OR OTHERWISE BEEN RENDERED HARMLESS.



SILT SACK DETAIL  
NOT TO SCALE

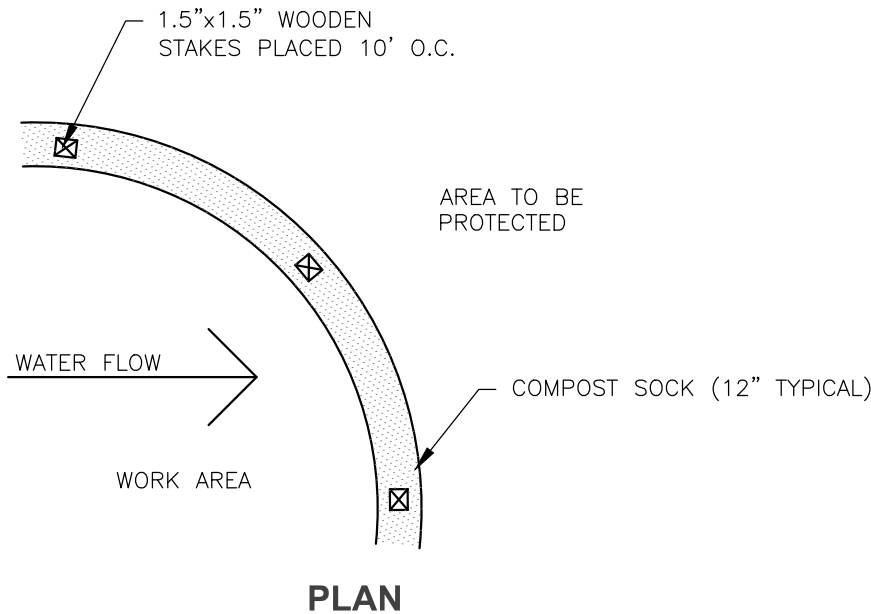
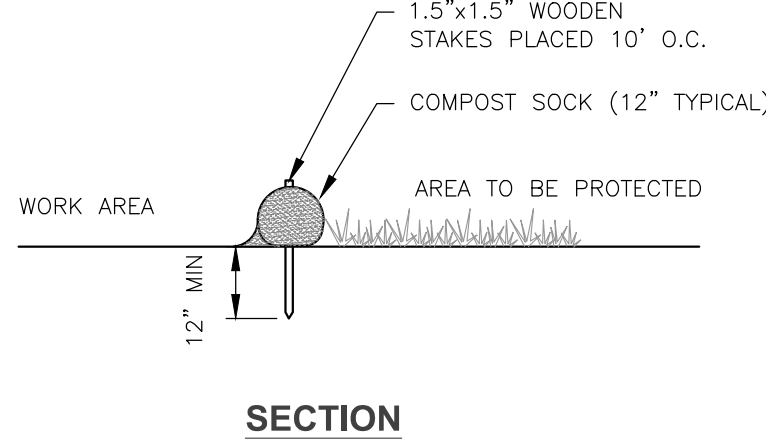
CONSTRUCTION SEQUENCING PLAN:

1. INSTALL TRAFFIC CONTROL MEASURES AND WARNING SIGNS AND DEVICES.
2. INSTALL UPLAND EROSION AND SEDIMENT CONTROL MEASURES AND TURBIDITY CURTAIN.
3. CONSTRUCT DEWATERING FACILITIES.
4. COMPLETE DREDGING OPERATIONS AND REMOVE AND STOCKPILE DREDGED MATERIALS.
5. COMPLETE DOCK AND BOAT RAMP.
6. MAINTAIN TURBIDITY CURTAIN UNTIL SUSPENDED SEDIMENT IN THE WORK AREA IS CLEAR FROM THE WATER COLUMN, AS DETERMINED BY THE ENGINEER OR OWNER. REMOVE TURBIDITY CURTAIN UPON DIRECTION OF THE ENGINEER OR OWNER.
7. MAINTAIN DEWATERING BASINS UNTIL ALL DREDGED MATERIALS ARE REMOVED FROM SITE BY OWNER.
8. LOAM AND SEED ALL LAWN AREAS DISTURBED BY CONSTRUCTION OPERATIONS. RESTORE GRAVEL DRIVE AND PARKING LOTS TO PRECONSTRUCTION CONDITION AND GRADES. COMPLETE FINAL RESTORATION AND CLEAN-UP.
9. REMOVE EROSION AND SEDIMENT CONTROL MEASURES UPON STABILIZATION OF DISTURBED AREAS.
10. REMOVE TRAFFIC CONTROL MEASURES AND WARNING SIGNS AND DEVICES UPON COMPLETION OF WORK.

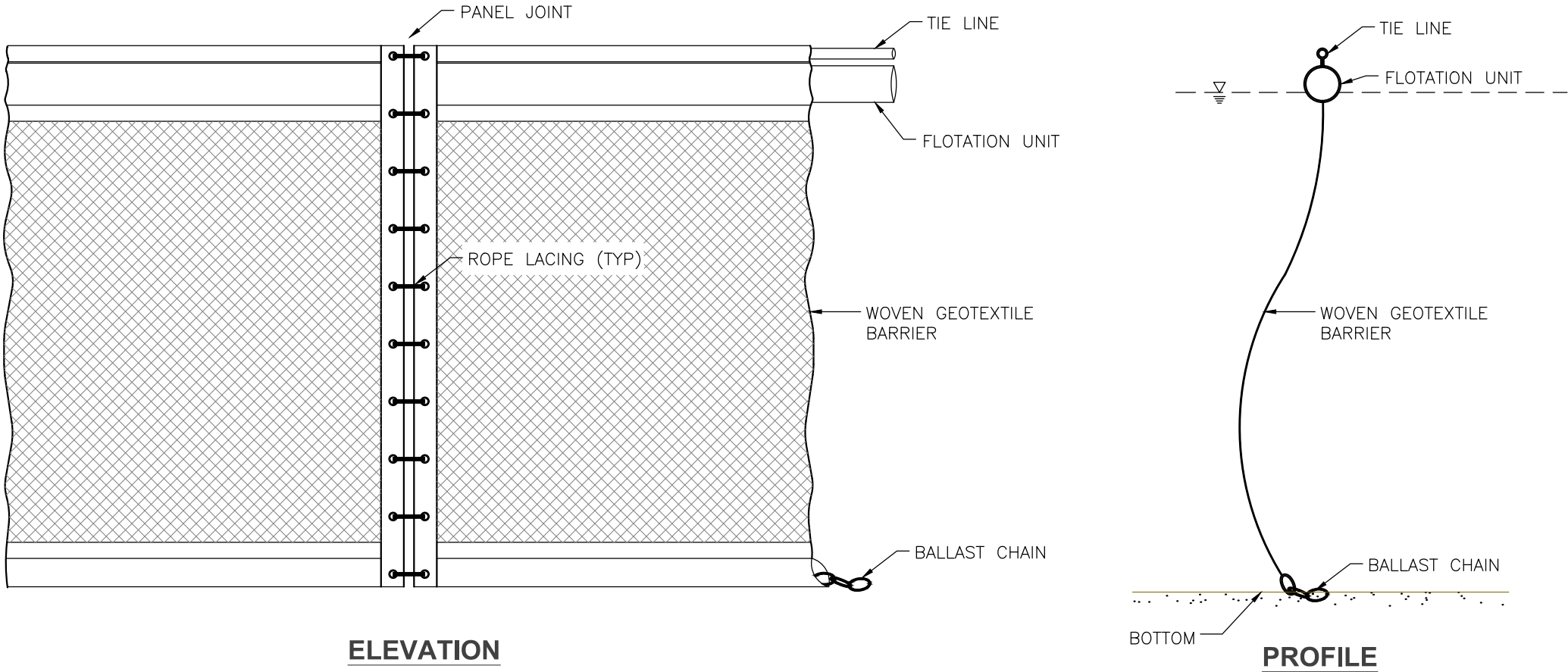


- NOTES:
1. INSTALL HAY BALES, MULCH BERM OR SILT SOCK AS REQUIRED AND AS DIRECTED BY THE ENGINEER.

SILT FENCE DETAIL  
NOT TO SCALE

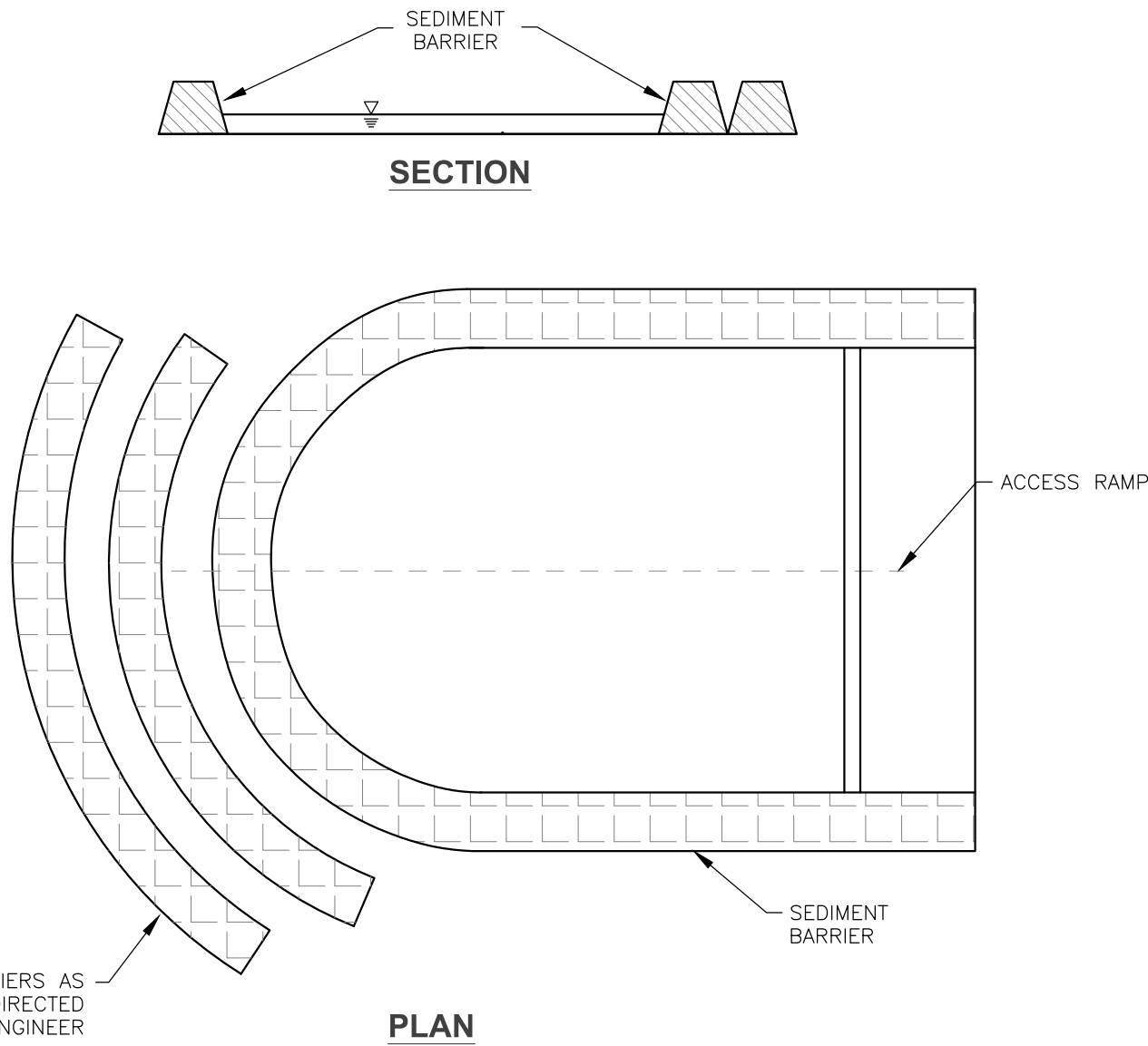


SILT SOCK DETAIL  
NOT TO SCALE



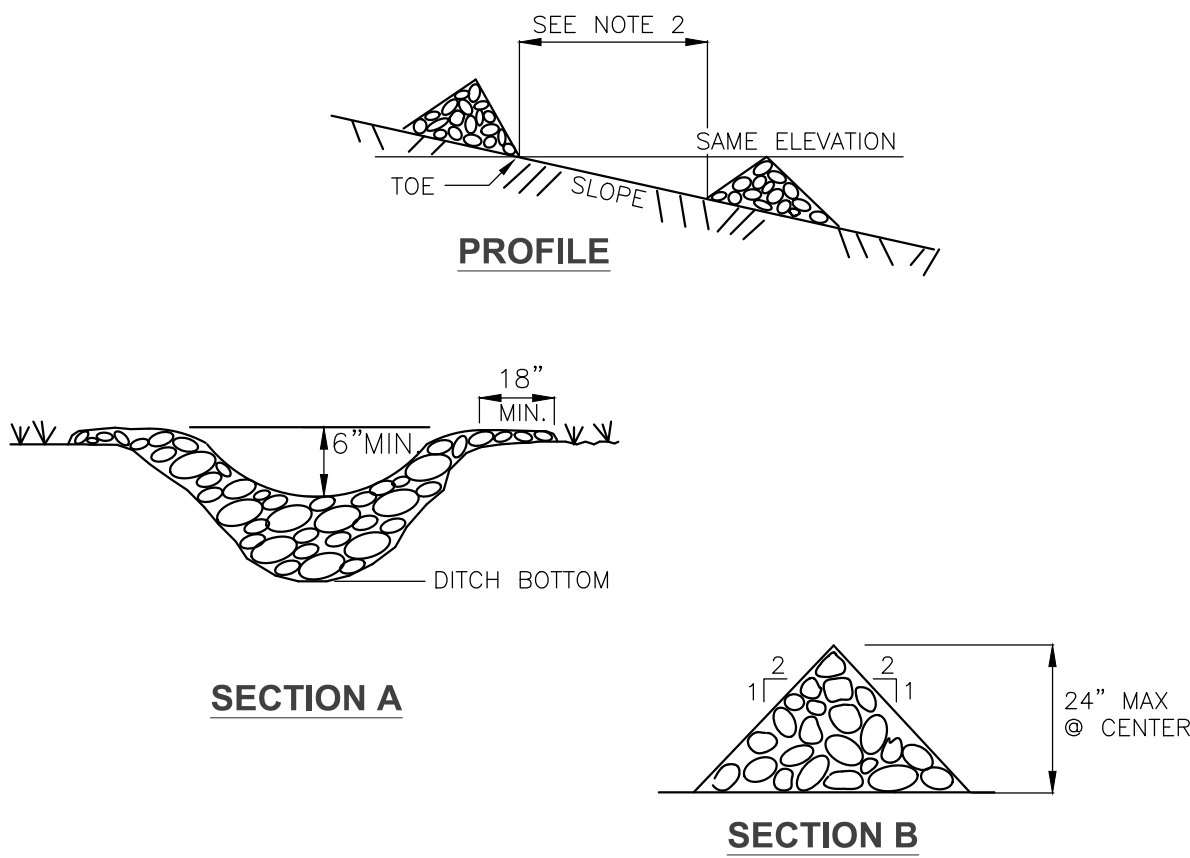
- NOTES:
1. TURBIDITY CURTAIN SHALL BE PLACED SUCH THAT THE BALLAST CHAIN RESTS ON THE BOTTOM AT ALL LOCATIONS.
2. CURTAIN ANCHORS SHALL BE INSTALLED AT ALL CORNERS AND AT A MAXIMUM SPACING OF 25' ALONG STRAIGHT SECTIONS OF THE CURTAIN.
3. BARRIER SHALL PREVENT SILT AND TURBIDITY FROM EXITING WORK AREA.

TURBIDITY CURTAIN DETAIL  
NOT TO SCALE



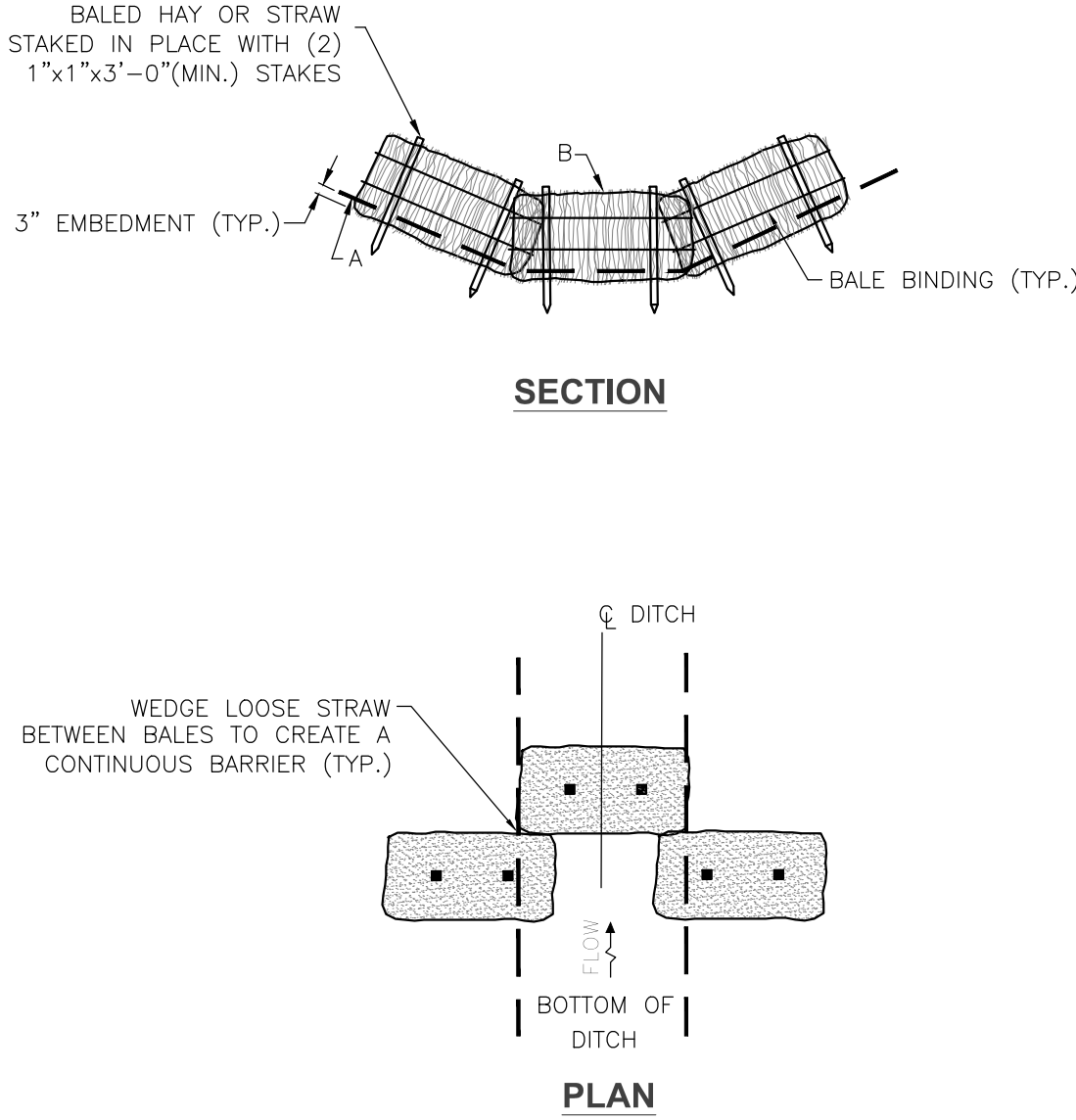
- NOTES:
1. BASIN SIZE TO BE FIELD DETERMINED BY CONTRACTOR. ADJUST AS REQUIRED TO FULLY CONTAIN AND DEWATER SEDIMENT.
2. DEWATERING BASIN SHALL BE MAINTAINED IN FUNCTIONAL CONDITION AT ALL TIMES.

DEWATERING BASIN DETAIL  
NOT TO SCALE



- NOTES:
1. PLACE STONE TO THE LINES, GRADES AND LOCATIONS SHOWN AS ON THE PLANS OR AS DIRECTED.
2. SET SPACING OF CHECK DAMS SO THAT THE ELEVATION OF THE CREST OF THE DOWNSTREAM DAM IS AT THE SAME ELEVATION AS THE TOE OF THE UPSTREAM DAM.
3. EXTEND THE STONE BEYOND THE DITCH BANKS TO PREVENT CUTTING AROUND THE DAM.
4. PROTECT THE CHANNEL DOWNSTREAM OF THE LOWEST CHECK DAM FROM SCOUR AND EROSION WITH STONE OR LINER AS APPROPRIATE.
5. ENSURE THAT CHANNEL APPURTENANCES SUCH AS CULVERT ENTRANCES BELOW CHECK DAMS ARE NOT SUBJECT TO DAMAGE OR BLOCKAGE FROM DISPLACED STONE.

STONE CHECK DAM DETAIL  
NOT TO SCALE



- NOTES:
1. THE BALES ARE TO BE EMBEDDED A MINIMUM OF 3" INTO THE EXISTING GROUND, ROADWAY SLOPE OR DITCH SECTION.
2. POINT "A" SHOULD BE AT A HIGHER ELEVATION THAN POINT "B."
3. BARRIERS SHALL BE INSTALLED AT 50 FOOT INTERVALS ALONG THE CENTERLINE OF THE PROPOSED DRAINAGE DITCHES, OR AS DIRECTED BY THE ENGINEER, UNTIL PERMANENT SURFACE TREATMENTS ARE INSTALLED AND FULLY STABILIZED.

HAYBALE CHECK DAM DETAIL  
NOT TO SCALE

REVISIONS			
NUMBER	DATE	BY	DESCRIPTION
2	07/17/19	RHK	REVISE GENERAL NOTES AND CONSTRUCTION SEQUENCING PLAN
1	05/13/19	RHK	REVISE GENERAL NOTES, CONSTRUCTION SEQUENCING PLAN AND REVISE TITLE BLOCK

NOT FOR CONSTRUCTION

**KV Partners**  
CONSULTING ENGINEERS

PO BOX 7721  
GILFORD, NH 03247  
TEL: (603) 513-1909

PO BOX 432  
NEW BOSTON, NH 03070  
TEL: (603) 413-6550

www.kvpile.com

DATE:	08/15/18
SCALE:	AS NOTED
DESIGNED BY:	RHK
DRAWN BY:	NMT
CHECKED BY:	RHK
APPROVED BY:	RHK

STATES LANDING BEACH  
WATERFRONT IMPROVEMENTS PROJECT  
MOULTONBOROUGH, NEW HAMPSHIRE

GENERAL NOTES AND DETAILS

SHEET NO.

5

SHEET 5 OF 5